



Recycle
for
Michigan!

Planning for Action: Plans, Programs, Progress

Elisa Seltzer, Public Works Director
eseltzer@emmetcounty.org
www.EmmetRecycling.org



Successful Rural Michigan Recycling



- Who we are
- What we do
- How Planning got us here
- How recommended changes may help communities



Emmet County by the Numbers



30,000 people
14,000 households



Emmet County Governmental Units

22 government units:

- 2 cities
- 3 villages
- 16 townships
- Little Traverse Bay Bands of Odawa Native Sovereign Nation



Emmet County in a nutshell

- Tip of the mitt
- Rural, resort, tourist, summer associations
- Strong seasonal component
- Wide economic disparities
- Ski hills, golf courses, marinas, hospital, schools, many small retail establishments



How we started



County Solid Waste Planning Process



Decision Making Process -1990

- Solid Waste Management Plan included funding options, recycle drop sites, HHW Days
- Recycle Funding Committee
- Solid Waste Ordinance
 - Pay-As-You-Throw
 - Flow Control for level playing field
 - License/Regulate Haulers



Start-Up Funding

- Solid Waste Alternatives Program grant
- Clean Michigan Fund grant
- County millage (.25 mil, two year)



Initial Capital Investments

Expenditures

Buildings	\$146,842.00
Equipment	\$207,608.00
<u>Truck/containers</u>	<u>\$144,274.00</u>
Total	\$498,724.00

Contributions to Capital

County Millage	\$376,750.00
<u>State Grants</u>	<u>\$218,920.00</u>
Total	\$595,670.00



The Emmet County Model



Emmet County
Recycling

Convenient

Comprehensive

Cost-Effective

Ordinance

Flow Control

Pay-As-You-Throw



Pay-as-you-Throw Incentives Waste Reduction



Public-Private Partnership Transportation & Disposal



Recycle Drop-off Sites





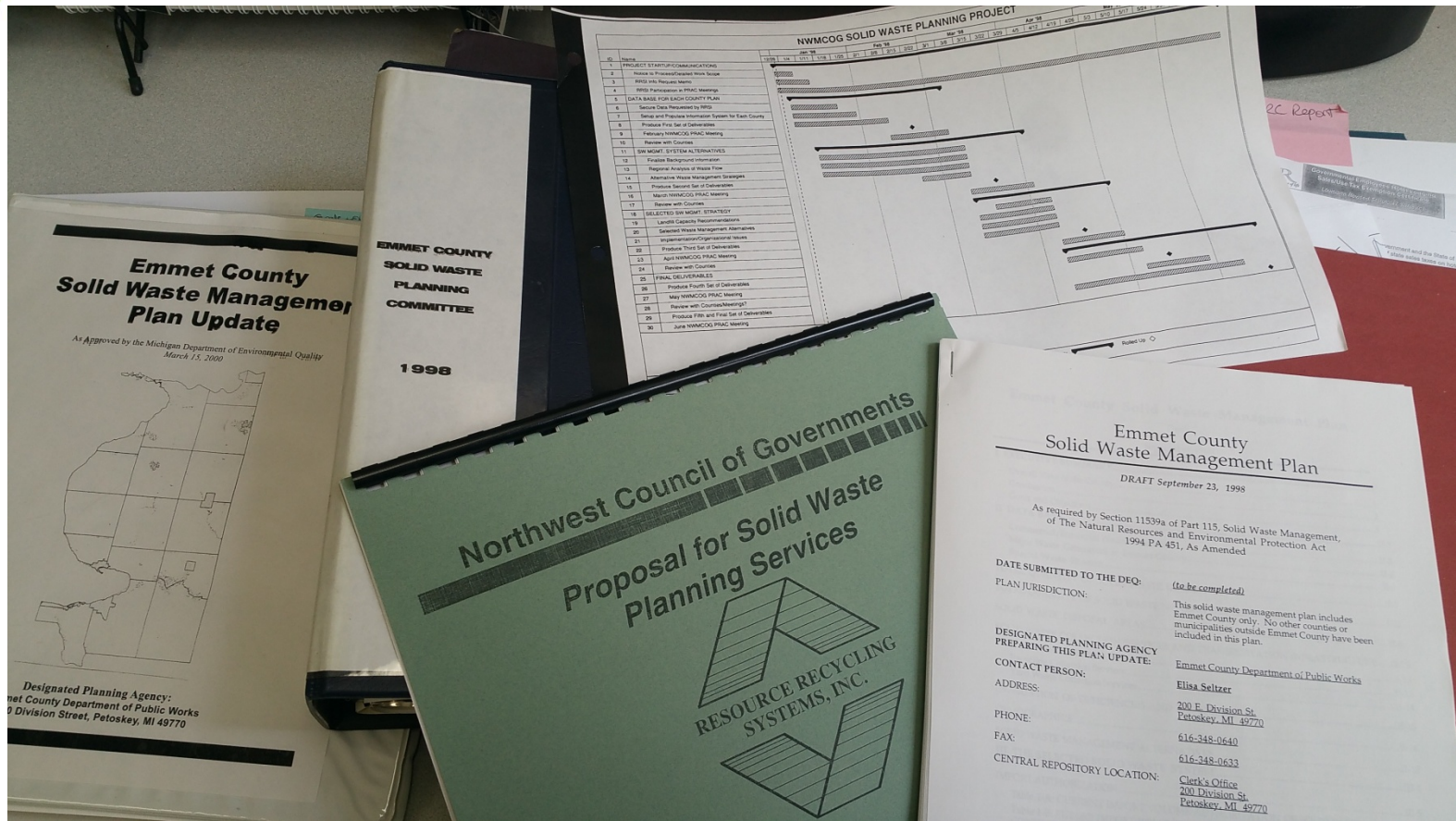
Solid Waste Planning 1998 - 2000

Regional Planning Approach

- NEMCOG 10-County Region
- DEQ Funding Pooled
- Resource Recycling Systems (RRS) Consultants
- Six month Process with SWMP Committee & RRS



It's a Process!



Emmet County's Solid Waste Plan 2000 Update

- Clean Community provisions
- Drop off Residential Recycling
- Residential Yard Waste Composting
- Material Transfer and Processing
- Recycling Incentives
- Curbside Residential Recycling
- Commercial Recycling Collection
- Disposal



RRS Proposal to NWCOG

- Assist NWCOG members in working together on common elements of SWP
- Evaluate collaborative and individual county waste management alternatives
- Assist NWCOG members in interpreting and meeting MDEQ requirements
- Both collective & individual work



Seven Goals, 26 Objectives

- Maintain, Support, Expand Recycling & Resource Recovery Programs/Facilities
- Eliminate Pollution Resulting from Waste
- Improve Efforts to Eliminate Illegal Dumping
- Maintain Competitive Waste Mgmt Services
- Provide adequate Revenues
- Increase Public Awareness
- Work Cooperatively with Others

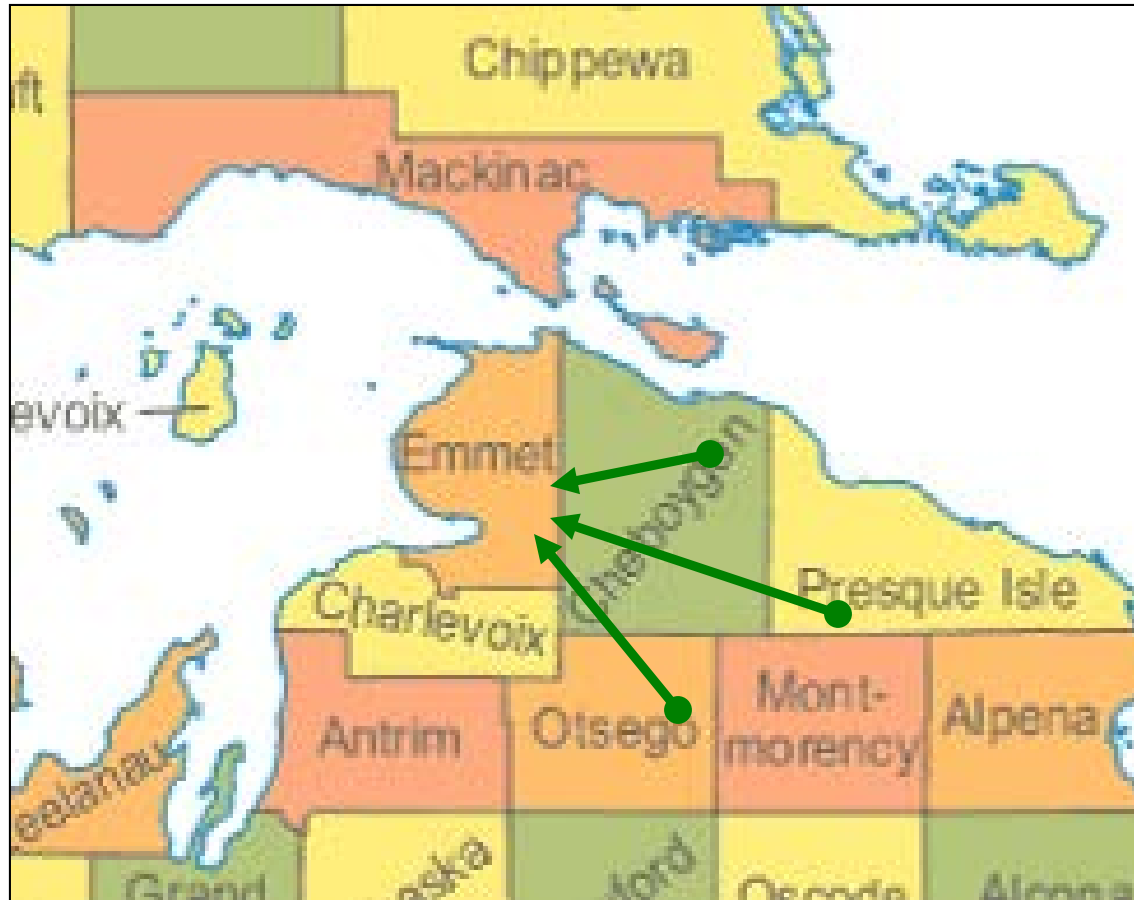


Drop-Sites

- 12 drop-sites throughout the county
- On main commutes and near frequently visited locations



Hub and Spoke



Serving a population of 100,000



Curbside Recycling



Residential Curbside

- 5 municipalities participate in curbside recycling at no cost to residents.
- 1 more municipality will begin in June, the first route added since the program began in 2004.



Commercial Curbside

Over 350 business participate in commercial curbside collection



Recycling

- Over 350 businesses use Curbside Recycling service





Leveraged funding = Carts at the Curb



Dual-stream expansion 2010



2 Categories



Paper, Boxes and Bags



Mixed Containers





Our MRF



97% of Our Recyclables Supply Businesses in Michigan



- Returning value to our communities
- Keeping jobs and resources in Michigan



Emmet County Transfer Station and Recycle Processing



“Super” Drop-off Center

- Yard waste
- Electronics
- Textiles
- Motor oil
- Light bulbs
- Batteries
- Plant Plastics
- Latex Paint
- Tires
- Rubble
- Scrap Metal
- Document Shredding
- Mattresses
- And much, much more



Comprehensive

Recycle more, sort less

Drop Site and Curbside

Mixed Containers

Juice boxes, milk cartons and paper cups

- Please rinse and flatten.
- NO juice pouches or straws

Plastic bottles, jugs and jars

- All numbers: #1, #2, #3, #4, #5, #6, and #7
- NO Styrofoam
- NO motor oil jugs
- Please rinse and flatten. *There's no need to remove labels.*
- NO toys, buckets, or durable dishes
- NO "biodegradable" or corn-based plastics (PLA)
- NO plastic bags. They belong with your Paper, Boxes and Bags.

Plastic tubs, trays and cups

- All numbers: #1, #2, #3, #4, #5, #6, and #7
- NO Styrofoam
- Please rinse and flatten. *There's no need to remove labels.*
- NO durable dishes, wash tubs, buckets, etc.
- NO "biodegradable" or corn-based plastics (PLA)
- NO plastic bags. They belong with your Paper, Boxes and Bags.

Metal cans, foil and trays

- Metal lids are okay.
- Aluminum, steel and tin
- Please rinse and flatten.
- NO aerosol cans or propane tanks

Glass bottles and jars

- Clear, green, brown, and blue
- Please rinse.
- NO light bulbs, window glass, or glass dishes

Paper, Boxes and Bags

Cardboard and paper bags

- Boxes from frozen and refrigerated foods are okay.
- Board—like cereal boxes and paper towel cases—is okay.
- Please remove packing materials and flatten.
- NO Styrofoam
- NO pet food bags
- Accepted at all drop sites.
- Curbside Only: Cardboard must fit entirely in your green tone.
- NO loose plastic bags. Please stuff all plastic bags into one bag and tie it shut.

Plastic grocery and bread bags

- Stretchy bags only
- Clean, dry bags only
- Please put all of the bags into one bag and tie it shut.
- Shrink wrap—like around rolls of paper towels and cases of water bottles—is okay.
- NO cling wrap. *Send in wrap, food and cover dishes.*
- NO cereal box liners
- NO "crunchy" plastics—collapsible, potato bag, potato chip bags, etc.



Newspapers and inserts

- NO newspapers which have gotten wet and/or yellowed

Magazines, catalogs and books

- Hardcover, paperback, and phone books are okay.

Office paper

- Accepted at all drop sites
- Junk mail and envelopes
- Copy paper, writing paper, and file folders
- Shredded paper, too
- *Please put it in a manila bag.*
- NO construction paper or dark or bright copy paper
- NO padded, plastic, or Kraft (gold paper) envelopes
- *There's no need to remove:*
 - paper clips
 - plastic windows from envelopes
 - stickers
 - sticky notes
 - mailing labels
 - staples
 - tags

Still not sure if it's recyclable?

Visit us at www.EmmetRecycling.org or call 231-348-0640

Recycle even more—at the

Drop-off Center

Clothing and bedding

- Clean and dry only, please.
- FREE

Shoes and work boots

- Please rubber band in pairs.
- FREE

Small appliances

- Please throw away removable parts not made of plastic or metal—vacuum cleaner bags, glass carafes, wicks, microwave turntables, etc.
- FREE

Large appliances

- (also see Electronics)
- \$5 per item handling fee
- Refrigerator, freezer, air conditioner or dehumidifier: If not tagged by a certified technician—as required by law before recycling or disposal—add \$25.

Electronics

ALL FREE! ALL THE TIME!

- All electronics from households and businesses with under ten employees are now accepted for FREE! Limit seven items per day.

* Businesses with over ten employees, please call for fee information.

Drop-off Center (continued)

Batteries

- All kinds of vehicle and household batteries are accepted at the Drop-off Center.
- Household batteries may also be dropped off during business hours at:
 - Anson**—E.W. Fairbairn & Son
 - Harbor Springs**—Meyer Hardware & Deans Fisher Building Center
 - Mackinaw City**—Coffman Hardware and the Village Hall
 - Pellston**—Cook Hardware
 - Petoskey**—Fischmann's CarQuest, Meyer Ace Hardware, and Radio Shack
- Batteries from home use FREE
- Businesses \$1 per pound

Fluorescent light bulbs

- Compact fluorescent bulbs okay
- NO broken bulbs
- NO incandescent (ordinary) or halogen bulbs
- Bulbs from home use FREE
- Businesses: please call 231-348-0640 for rates.

Tires

- On the rim is okay.
- 12" each for car and light truck tires
- Bike tires 4 for \$2.
- Call for other tire prices.

Motor oil plus

- Hydraulic fluid, fuel oil, automatic transmission fluid, lube oils, and diesel fuel are okay.
- NO gasoline or contaminated oil (e.g., oil with gas or water) To dispose of these call the Household Chemical Drop-off Program at 231-348-0640.
- FREE

Antifreeze

- Both ethylene and propylene glycol-based products
- FREE

Asphalt shingles

- Can include nails, tar paper, and felt
- Shingles must be from a home. If from apartments or condominiums there must be 4 units or fewer in the building.
- Accepted seasonally from April 1 to November 1
- NO cedar shakes, roll roofing, roofing tiles or drip edge
- SAVE! 110 cubic yard to recycle, \$22 to landfill

Rubble and ceramic fixtures

- Rocks, bricks, concrete, asphalt, ceramics, and porcelain including toilets, sinks and bathtubs
- Rebar and wire mesh are okay.
- Please remove seals, brackets, etc. from plumbing fixtures.
- NO lead paint or asbestos
- SAVE! 110 cubic yard to recycle, \$22 to landfill

Wood

- NO treated wood, plywood, or particle board
- Nails are okay.
- SAVE! 110 cubic yard to recycle, \$22 to landfill

Scrap metal

- Steel, aluminum, copper, cast iron, and other metals
- NO propane tanks
- NO vehicle tanks
- FREE



Hazardous Recyclables Drop-off



Yard Waste and Composting





Finished Compost



Commercial Food Scrap Collection

Feeding Farms & Gardens, Not Landfills

- Over 20 restaurants and flower shops in Petoskey and Harbor Springs.
- Commercial food waste comprises 30% of the waste stream going to our local landfill
- Since 2015, we have collected almost 500,000 pounds of food and flower scraps







Over 200,000 lbs collected in 2016



Compost Facility



Residential Food Scrap Collection

- FOGs Collection
- Food Scrap Drop-off at our facility and 2 farmers markets
- Truckload Bin Sale
 - Compost bins
 - Rain barrels
 - Green cone Digesters
- Farmers Markets
 - Give away 600 food scrap reduction toolkits with a pledge to reduce food waste
 - Sell bagged compost
 - Collect food scraps from residents



Give all food
a future





Community Foundation Grants Funding Food Waste Reduction Efforts





Emmet County's Black Gold Compost



Our Compost in Use



Event & Public Space Recycling

- Festival by the Bay
- Soccer Tournaments
- July 4 Parades
- Art in the Park
- BlissFest Music Festival

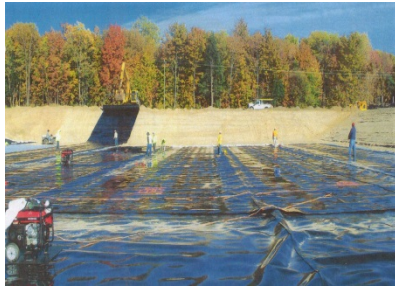


Changing Solid Waste Landscape

- Policy: waste is a resource
- Sustainability
- Governor's Recycling Initiative



Are the current laws effective?



- State of the art landfills



- Healthy communities



- Neglect materials management needs



What's the issue?



Out of date regulations



Low municipal recycling rate



Lack of convenient recycling infrastructure



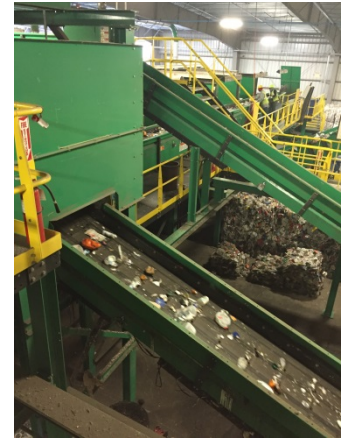
GRC and SWSAP

- Governor's Recycling Council
- Solid Waste & Sustainability Advisory Panel



Materials Management Planning

- Focus on utilization capacity
 - Measurable goals and objectives
- No import/export limits
- Promote Regional Planning Benefits
- Tighten process



Materials Management Facility Oversight

- Formerly exempt activities
- Inspections
- General permits
- Benefits



Technical Fixes and Regulatory Improvements

- Landfill custodial care
- Financial assurance
- CCR
- Benefits

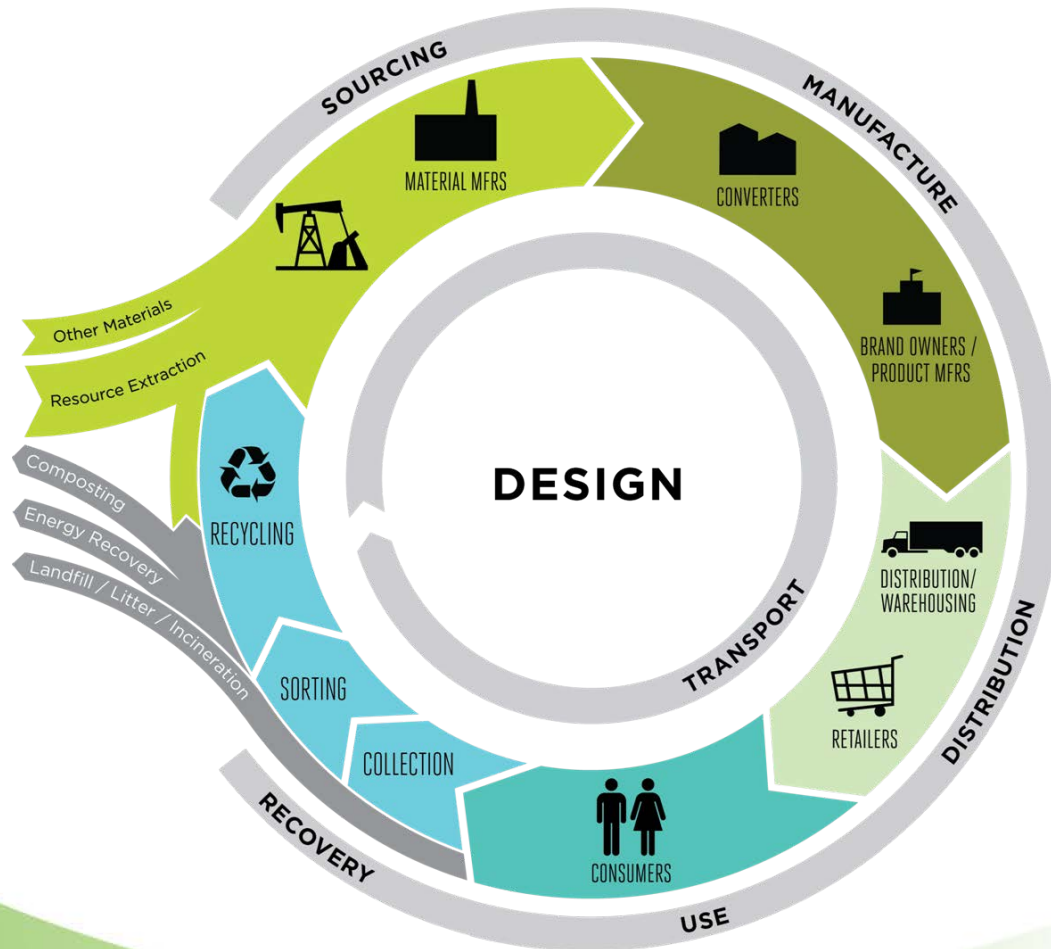


Recycling Access

- Curbside and drop-off
- Convenient comprehensive recycling universally accessible
- Include in MMPs
- Public and private sector solutions



Recycling Market Development & The Circular Economy



Michigan Recycling Market Development Initiative

- Technology Transfer
- Business Development
- Recycling Market Development Fund:
 - R&D
 - Incentivize business innovation
 - Similar to Scrap Tire Market Development Fund



Partner with National Sustainability Initiatives, Trade Associations, Funding Opportunities

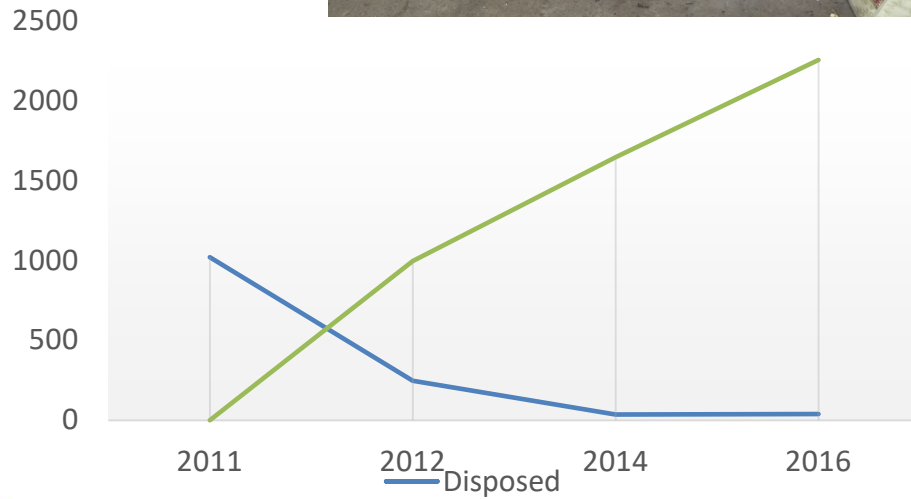


Michigan Recycling Markets Profile

- How much is disposed?
- What is the value of recycled product to Michigan's economy?
- Get the data
- We all benefit:
- Consumers, Michigan Manufacturers, local governments



Target Gaps in Supply & Demand



Incentivized Pricing
can Drive Behavior
Grow Jobs &
Increase
Recycling Rates



More Recyclables Supply Manufacturers with the Feedstock they need to grow jobs in Michigan

- Hard to Recycle Materials need help bridging the gaps
- Develop policies to encourage use of recycled content materials.



State Leadership: MDEQ, MEDC, MDOT



- State agencies to Lead by Example: Policies, technical support, and incentives to drive demand for recycled materials. Encourage purchase of recycled content material; drive Michigan production



Education and Engagement

- Statewide campaign
- Tools, templates & media for locals
- Technical assistance for service providers, communities, businesses, institutions, and industry
- The State will continue to Lead-by-Example
- Benefits to public



Statewide Campaign & Technical Assistance

- Provides Michigan residents with factual information
- Drives participation and cost-effectiveness
- Builds awareness
- Gives service providers necessary compliance foundation



Investment in Infrastructure

- \$1.3 billion annual spend on waste
- \$3.2 billion private, public, and public-private partnership assets
- Public and Private investment necessary that will respond to market conditions resulting from goal of doubling recycling rate.



Funding

- State funding mechanisms to support
 - Planning and program implementation
 - Incentivize private and public capital and program investments needed to double recycling rate.
- Michigan Recycling Improvement Fund
 - Grant and low interest loans for planning, market development, technical assistance, outreach and engagement, measurement and compliance.



Key Improvements

- Holistic infrastructure system to manage materials more sustainably
- Revitalized solid waste law
- Actionable steps to achieve Governor's recycling goal
- Broad-based, long-term public and private funding





Emmet County Recycling

Elisa Seltzer, Director
Emmet County Dept. Public Works
eseltzer@emmetcounty.org
231 348-0640
www.EmmetRecycling.org

