

Policy Update

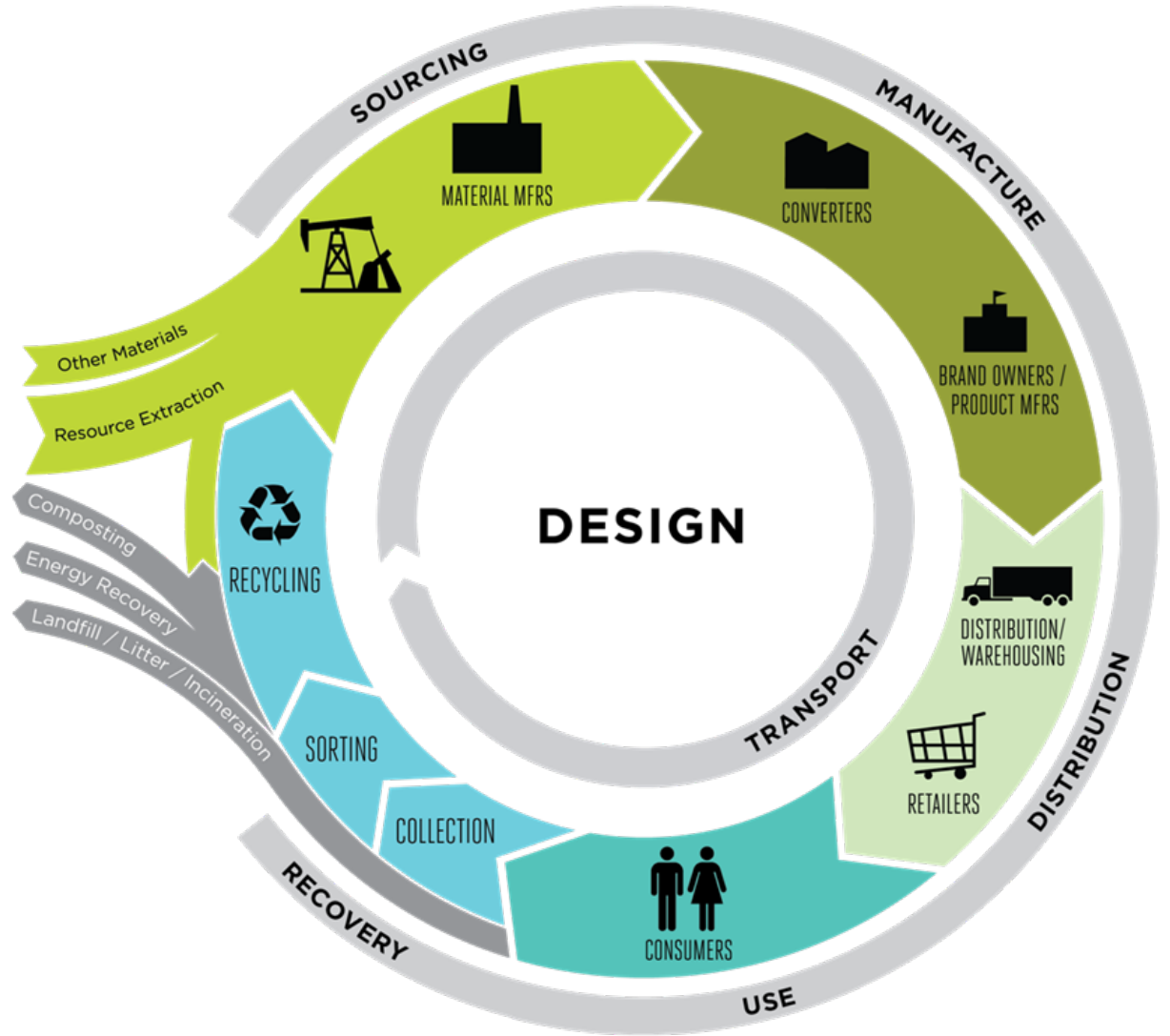
Steve Sliver

Michigan Department of
Environmental Quality

517-927-0095

slivers@michigan.gov





2 Advisory Groups Unite

- Governor's Recycling Council
- Solid Waste and Sustainability Advisory Panel
- Release Complementary Reports



Michigan Recycling Coalition
Michigan Environmental Council
Michigan Municipal League
Michigan Townships Association
Michigan Association of Counties
Michigan Manufacturers Association
Michigan Chamber of Commerce
Michigan Association of Regions
US Ecology
Environmental Consultants
Sustainability Consultants
Michigan State University
Michigan Waste and Recycling Association
Michigan Soft Drink Association
Michigan Grocers Association
Delta County Solid Waste Management Authority
Emmet County Public Works Department
Kent County Public Works Department
Plastipak Packaging – Clean Tech
Consumers Energy
Central Upper Peninsula Planning and Development Regional
Commission



Key Messages

- Holistic infrastructure system to manage materials more sustainably
- **Revitalized solid waste law***
- Actionable steps to achieve Governor's recycling goal
- Broad-based, long-term public and private funding



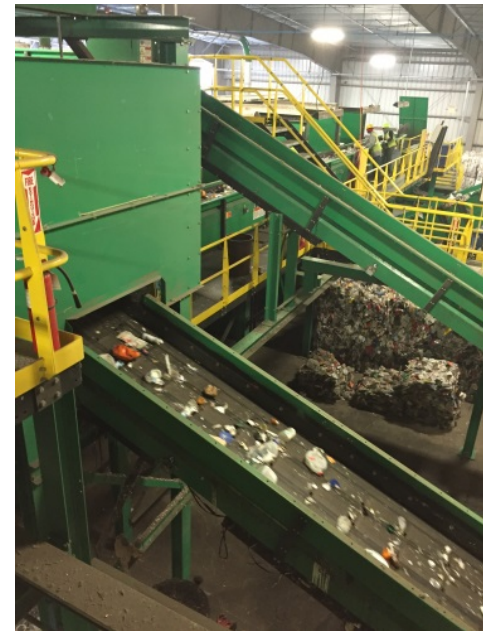
Landmark Legislation



- Materials management planning
- Materials management oversight
- Technical Fixes and Regulatory Improvements
- Recycling access

Materials Management Planning

- Focus on utilization capacity
 - Measurable goals and objectives
- No import/export limits
- Tighten process
- Promote regional planning
- Incorporate ways to increase recycling access, participation



Materials Management Facility Oversight

- Formerly exempt activities
- Inspections
- General permits



Technical Fixes and Regulatory Improvements

- Landfill custodial care
- Financial assurance
- CCR



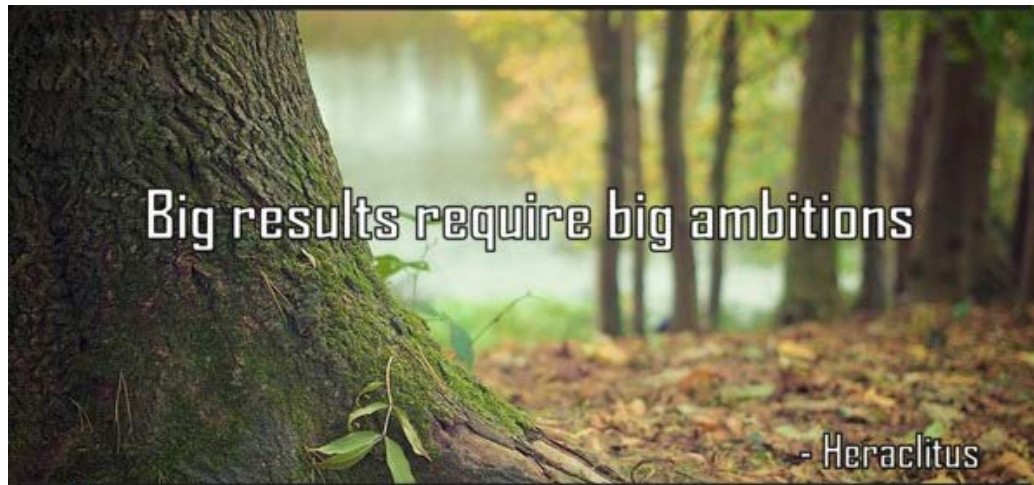
Recycling Access

- Curbside and drop-off
- Convenient comprehensive recycling universally accessible
- Public and private sector solutions



Legislation Development

- Drafting underway
 - DEQ and advisors
 - Legislative Service Bureau
- Fall introduction
- Law by May 2018



Together

- Maintaining broad support requires maintaining comprehensive package





Adding More to Broaden Support


- Schupan
- American Waste
- UBCR
- Associated Food and Petroleum Dealers
- Wayne County DPW
- AMERIPEN
- Northville Township
- Etc.

Stay with the big plan



Possible Timeline for New MMP?

| Year | Funding | Planning |
|------|--|------------------------|
| 2018 | Start collecting new revenue | Education and Outreach |
| 2019 | Appropriation available October 1 annually | Call for update |
| 2020 | | Update process |
| 2021 | | |
| 2022 | | |
| 2023 | | DEQ approval |
| 2024 | | Repeat |
| 2025 | | |



"Someone's sitting in the shade today because someone planted a tree a long time ago."

Warren Buffett

Seize the Opportunity

- Be proactive – Get Ready!
- Be a leader
- Educate and encourage state and local leaders
- Support comprehensive package



Sustainability



People. Planet. Prosperity.



This is Our Plan

- **BIG** change
- Keep it big and work **TOGETHER**
- Act **NOW**

Michigan Department of Environmental Quality

800-662-9278

www.michigan.gov/deq

 Sign up for email updates

 Follow us on Twitter @MichiganDEQ

