



CONNECTING THE DOTS

CLOSING THE LOOP

36TH ANNUAL
CONFERENCE &
STATE OF RECYCLING

The Largest Recycling & Organics Conference & Exhibition in Michigan

May 15-17, 2018

Kalamazoo Radisson

*Reserve your hotel room
by Monday, April 30th
and save!*

YOUR ONE STOP FOR RECYCLING INFORMATION & EXPERTISE

- Explore the future of recycling, organics & sustainable materials management in Michigan
- Benefit from fantastic networking opportunities
- Learn from thought-provoking Keynote presentations
- Participate in informative educational & training sessions
- Meet with service providers & product manufacturers that can help you achieve your goals
- Get motivated to make even more of a difference than you already do... and have fun doing it!
- A zero waste event



SUPPORT OUR 2018 SPONSORS

Their generosity & commitment helps make all of this happen

Grand Sponsor



Diamond Sponsors

HAWORTH®



Platinum Sponsors



Gold Sponsors



COMPRENEW



Recycling
MICHIGAN STATE UNIVERSITY



GENERAL MOTORS

ABOUT THE 36TH ANNUAL MRC CONFERENCE & DEQ STATE OF RECYCLING

Governor Snyder continues to lead efforts to update Michigan solid waste law and provide funding for initiatives to triple Michigan's recycling rate! This event will serve as a platform to share details about the various initiatives, key legislative measures, best practices, and successful programs. Enhanced materials management programs and services have the capacity to benefit every business and community in the state. Join recycling and organics colleagues and champions from across Michigan to learn, share, network, and contribute to the advancement of sustainable materials management goals that put Michigan first.

Silver Sponsors





Bronze Sponsors



PROCLAIM & REMIND



Recycle, MI is the Michigan Recycling Coalition's statewide recycling outreach campaign. Connect your program to the statewide effort to raise awareness about the value of recycling and move Michiganders to recycle at home, at work, and at play. Visit www.RecycleMichigan.org to learn about the Recycle MI Partner Program and get access to outreach materials, products, and other available campaign tools.

TUESDAY, MAY 15

8 A.M.	8 A.M. REGISTRATION - at the Radisson			
9 A.M.	9 A.M. – Noon TOUR WestRock & Kellogg's	TOUR Schupan Electronics & Bell's Comstock Brewery	TRAINING MRF Operations & Economics	TRAINING Residential Recycling Development & Funding
10 A.M.				
11 A.M.	Morning coffee break sponsored by: 			
12 P.M.	Noon – 1 P.M. LUNCH provided for Tour & Training participants			
1 P.M.	1:30 – 1:45 P.M. WELCOME			
2 P.M.	1:45 – 2:30 P.M. Legislative Update			
3 P.M.	2:30 – 2:45 P.M. Recycling Data			
	2:45 – 3:10 P.M. Networking			
	3:10 – 3:30 P.M. Director Update			
	3:30 – 3:50 P.M. MEDC Leadership Update			
4 P.M.	3:50 – 4:50 P.M. Lightning Round			
5 P.M.	3:50 – 4:50 P.M. CLOSING			
6 P.M.	5 – 7 P.M. Exhibition Hall Grand Opening 			
7 P.M.	7 – 10 P.M. TRIVIA AT BELL'S Bell's Eccentric Cafe 355 E. Kalamazoo Ave, Kalamazoo			
8 P.M.				
9 P.M.				
10 P.M.				

DEQ STATE OF RECYCLING

WEDNESDAY, MAY 16

7 A.M.	7 A.M. REGISTRATION			
8 A.M.	8 – 9 A.M. BREAKFAST			
9 A.M.	9 – 10 A.M. KEYNOTE: Ellen Martin			
10 A.M.	10:10-11 A.M. Building Materials	Zero Waste	Recycling Movement	Curbside Recycling
11 A.M.	11:10- Noon REGIONAL MEETINGS East & SE Mid & Bay West & SW North & UP			
12 P.M.	Noon – 1 P.M. Networking LUNCH MRC Annual Meeting, Report, & Awards			
1 P.M.	1 – 3 P.M. Exhibition Hall Dessert Reception 			
2 P.M.	Exhibition Hall Open 1–7 P.M.			
3 P.M.	3:10 – 4 P.M. Blight	Sustainable Materials Mgmt	Battery Recycling	Program Improvements
4 P.M.	4:10 – 5 P.M. Ag Plastics	Overcome Challenges	Education on a Budget	Making Space for Sustainability
5 P.M.	5 – 7 P.M. Appetizers & Cocktails with the Exhibitors 			
6 P.M.				
7 P.M.	7 – 10 P.M. Meet the Board at the Bar <i>Maps available</i>			
8 P.M.				
9 P.M.				
10 P.M.				

THURSDAY, MAY 17

7 A.M.	7:30 REGISTRATION			
8 A.M.	8 – 9:15 A.M. BREAKFAST ROUNDTABLES			
9 A.M.	9:15 – 10:15 A.M. KEYNOTE: Rhodes Yepsen			
10 A.M.	10:10- Noon Composting	Market Update	Generational Communication	Curb to MRF
11 A.M.				
12 P.M.	Noon – 1 P.M. LUNCH DEQ Recognitions & MRC Awards of Recycling Excellence			
1 P.M.	10:10 – Noon Organics	Mixed Plastics	Bins & Signage	Single Hauler
2 P.M.	2 – 3 P.M. PLENARY PANEL: Part 115 Q&A			
3 P.M.				
4 P.M.				
5 P.M.				
6 P.M.				
7 P.M.				
8 P.M.				
9 P.M.				
10 P.M.				



TUESDAY, MAY 15

Morning coffee break
sponsored by:



MRC members get preferred pricing for the Conference.

Join now for a conference registration discount and also benefit from weekly newsletters, access to a great network of recycling professionals, and representation at the state level on issues important to the future of recycling - all year long. The on-line registration form provides an opportunity to become a member.

REGISTRATION OPEN 8 A.M.

All programs start at 9 A.M. sharp. Please allow time for registration and check in.

TOURS 9 A.M. – Noon

Transportation provided. Wear sturdy, close-toed shoes. Personal protection gear and waivers required for some sites.

WESTROCK & KELLOGG'S

WestRock, Battle Creek is a 100% recycled content corrugated container manufacturer. This mill tour will show the process of making recycled feedstock into the finished product. The tour will include stops in the "stock preparation" area where recycled scrap paper is processed in pulpers and cleaned before moving into the "machine room" to be formed into a continuous sheet of paper. Attendees will travel through the drying section into the coating section where two layers of coating are applied to enhance the printability of the paper board. The last step is the finishing process where jumbo rolls of paper are cut into smaller rolls for shipping.

Kellogg's is headquartered in Battle Creek and attendees will tour a pilot plant to learn how Kellogg's commitment to sustainability is interwoven into their operations. Kellogg's focuses on responsible sourcing and conserving natural resources on a global scale. They are working to reduce energy use, greenhouse gas emissions, water use, and waste generated at their facilities. They have a long history of using recycled content in their cereal boxes and have incorporated the How2Recycle Label on their packages to encourage recycling.

OR

SCHUPAN ELECTRONICS RECYCLING & BELL'S COMSTOCK BREWERY

Schupan Electronics Recycling is an R2- and RIOS-Certified recycler of electronic waste. See how old electronic devices are processed into raw materials such as plastic and aluminum. See how circuit boards are shredded and sent to smelters for precious metals recovery. Follow the flow of materials through the facility, including the intake/inventory area, initial materials sorting, manual disassembly, the shred/automated sort line, circuit board grading and shredding, hard drive destruction, universal waste management, and final outbound staging and shipping.

Bell's Brewery is famous and its history is impressive. Learn about all that and the brewing process on this tour of their brewhouse. Attendees will see Bell's fermentation and packaging spaces as well as their recycling systems. Learn about Bell's commitment to efficiency in design and operational sustainability efforts, including their on-site wastewater treatment plant. Two samples from the tasting room will be available to visitors. You must have ID to partake.

TRAINING 9 A.M. – Noon

OPERATIONS AND ECONOMICS OF THE MRF

Brent Shows, Advanced Disposal • Kelly Rooney, Advanced Disposal

Develop an intimate understanding of the role of the Materials Recovery Facility (MRF) in the recycling cycle. Recycling managers from Advanced Disposal take you inside the MRF to show you all the aspects of making a MRF a sustainable business. Get a keen understanding of MRF operating costs based on material flows and composition. Learn how to manage commodities and fluctuations in markets and revenue. Understand the importance of relationships in making good business out of recycling. If you're new to the business or are looking to develop a deeper understanding about how recycling works, this training dives deeply and shows what it takes for a MRF to thrive.

OR

DEVELOPING AND FUNDING A SUSTAINABLE RESIDENTIAL RECYCLING PROGRAM

Sarah Archer, IRIS Waste Diversion Specialists, Facilitator • Matt Biolette, Republic Services • Elisa Seltzer, Emmet County

With proposed changes to Michigan solid waste law, communities of all demographics will be looking for ways to meet recycling access standards and deliver a comprehensive suite of resource recovery opportunities that meet the needs of their residents and businesses. Review the variety of ways curbside, drop-off, and special event services are being provided across the state, depending on the needs and makeup of the community. Learn the best practices for program design and development and how to work effectively with private sector service providers through contracting, franchising, and public-private partnerships for service delivery. Understand the local and potential state level funding mechanisms that can be leveraged by the public sector to provide curbside and drop-off services for a wide range of typical and hard-to-recycle materials. Come see how - with strong best practices, contracting savvy, and public sector leadership - you can develop a stand-out recycling program for your community.

LUNCH Noon – 1 P.M. For Tour & Training participants only.

STATE OF RECYCLING DEPARTMENT OF ENVIRONMENTAL QUALITY

WELCOME 1:30-1:45 P.M.

Angela Ayers, Director of Strategy, Executive Office of Governor Rick Snyder

Hear an overview of Governor Snyder's Renew Michigan proposal, a sustainable funding source for recycling activities and revitalized solid waste planning. Ayers will also discuss the Governor's additional recycling priorities, including efforts to increase recycling education statewide and improve recycling access in the State of Michigan.

LEGISLATIVE UPDATE 1:45 - 2:30 P.M.

Elizabeth Browne, Michigan Department of Environmental Quality

Hear about the steps being taken to support alignment of Michigan's policies and laws with Michigan's utilization and recycling goals. The DEQ has been coordinating development of new legislation with a broad-based team of stakeholders, including representatives of local governments, business and industry, environmental and recycling organizations, consultants, and academia. As a result of these collaborative efforts, the resulting bill will update the existing solid waste law in Michigan to create a culture that promotes the environmental, social, and economic benefits of managing materials more sustainably. Browne will share the background of this process and important information about the changes you will see coming to Michigan and how the work of these groups will support the next phase of waste minimization, utilization, and recycling growth.

RECYCLING DATA REPORTING AND ONLINE TOOLS 2:30 - 2:45 P.M.

Steve Noble, DEQ Sustainable Materials Management Unit

November 15, 2017 marked the end of the first year of required reporting under Public Act 175, Michigan's recycling measurement law. Hear an update about how the law is working, the data received, and how you can become involved to increase the value of the data collected. Learn about tools to promote recycling accessibility and how to manage reporting recycling data online.

NETWORKING BREAK 2:45 - 3:10 P.M.

DEQ DIRECTOR UPDATE 3:10 - 3:30 P.M.

Heidi Grether, DEQ Department Director

Director Grether will address attendees and talk about Departmental priorities in 2018, including achieving recycling goals.

MEDC LEADERSHIP UPDATE 3:30 - 3:50 P.M.

Steve Bakkal, Senior Vice President, MEDC

Learn about the Michigan Economic Development Corporation's priorities, the recycling market development initiative, and MEDC business development tools.

LIGHTNING ROUND 3:50 - 4:50 P.M.

Christine Chessler-Stull, Recycle Ann Arbor

Scott Vanderkooy, Comprenew

Rhonda Wisenbaugh, Thumb Industries, Inc.

Jeff McKeen, SOCRRA

Daryl Pierson, Wayne State University

Are you a representative of the public sector? The private sector? A nonprofit organization? Understanding your role in the recycling system is critical for making recycling work in Michigan. Learn about how your counterparts are making recycling work. Hear what they are doing to promote recycling access, recycling education, and electronic waste management through a lightning round of talks. Hear success stories from representatives doing innovative things at Recycle Ann Arbor and Washtenaw County (special events recycling), Upper Peninsula E-Waste Collaboration (e-waste recycling access), Thumb Industries, Inc. (increasing recycling through social impact project), Southeast Oakland County Resource Recovery Authority (increasing recycling access and processing capacity), and Wayne State University and Green Living Science (recycling education).

CLOSING STATEMENT 4:50 - 5 P.M.

Matt Flechter, Michigan Department of Environmental Quality



TUESDAY, MAY 15



Angela Ayers



Steve Bakkal

Sponsored by:





TUESDAY, MAY 15

WEDNESDAY, MAY 16



Ellen Martin

EXHIBITION HALL GRAND OPENING 5 – 7 P.M.

Filling hors d'oeuvres and a cash bar provide the perfect opportunity to unwind, schmooze a little, and prepare for an evening of fun. Exhibitors and sponsors will be available to continue the dialogue while you renew old friendships and cement new ones.

SUPPORT RECYCLING AT MRC'S FUND AFFAIR

The Fund Affair is back with more Michigan inspired donations. You could be the winner of a big ticket item or find your treasure at the Silent Auction and the Tin Can Raffle. Help communities and organizations enhance their education and outreach campaigns. All funds go to support the *Recycle, MI* campaign and MRC operations. Visit the MRC website for more specifics on your prize winning potential.



TRIVIA AT BELL'S 7 – 10 P.M.

Join fellow attendees at Kalamazoo's favorite brewery, Bell's Eccentric Cafe. Always a highlight of the MRC Conference, attendees can join colleagues on a short walk through downtown Kalamazoo to continue the networking fun. Maps will be available. Light food will be provided, you bring the networking and fun.

REGISTRATION 7:30 A.M.

BREAKFAST 8 – 9 A.M.

KEYNOTE PRESENTATION 9 – 10 A.M. RECYCLING PAYS

Ellen Martin, Closed Loop Partners

If we are to make meaningful progress "Closing the Loop" on materials, we have to understand what it will take. How do we turn this vision for recycling into reality? Ellen Martin of Closed Loop Partners will share insights and lessons learned from communities and companies that are seeing real success moving materials into the productive sphere. From municipal curbside collections, to MRF upgrades with the latest sorting technologies, to processors and end users that are turning post-MRF bales into value-added products, Closed Loop Fund's portfolio shows us that recycling does pay.

As Vice President for Impact and Strategic Initiatives, Ellen tracks progress and impact of the Closed Loop portfolio and generates actionable insights for partners, investors, municipalities, and industry. In 2017, she led research on PET, glass, and the capital landscape for circular infrastructure in the US. Prior to joining Closed Loop Partners, Ellen was a strategy consultant and partnerships director with FSG, the social impact consulting firm co-founded by Harvard economist Michael Porter. Her clients included corporations, foundations, governments, and nonprofits. During this time, she led the research team behind Fortune's inaugural "Change the World" list, featuring \$1Bn+ companies addressing global challenges through profitable business models.

CONCURRENT SESSIONS 10:10 – 11 A.M.

UNDERSTANDING THE BUILDING MATERIALS REUSE SUPPLY CHAIN

Chris Rutherford, Architectural Salvage Warehouse of Detroit

Developing the deconstruction and building materials reuse supply chain has been Rutherford's sole focus since 2011. From developing the workforce to establishing both consistent supply and demand, it has been an uphill battle. The Southeast Michigan building materials reuse economy has grown from a nascent industry of a few hundred thousand dollars with very few participants, to a multi-million-dollar economy representing hundreds of jobs. With the Building Materials Reuse Association annual conference coming to Grand Rapids this fall, we hope to share and spread national best practices and further establish a vibrant global reuse economy.

ZERO WASTE TO LANDFILL - ACHIEVABLE IN MANUFACTURING?

Bill Gurn, Haworth

Starting down the path to Landfill Free? It is achievable but it won't happen overnight. Office furniture manufacturer, Haworth, has accomplished zero waste to landfill at facilities across the country. Learn about how they accomplished the lofty goal and the unexpected costs and benefits of making and keeping the commitment to stay landfill free.

MORE SESSIONS ON NEXT PAGE

SESSIONS CONTINUED FROM PREVIOUS PAGE

HAS THE RECYCLING MOVEMENT LOST ITS SOUL?

Bryan Weinert, Recycle Ann Arbor

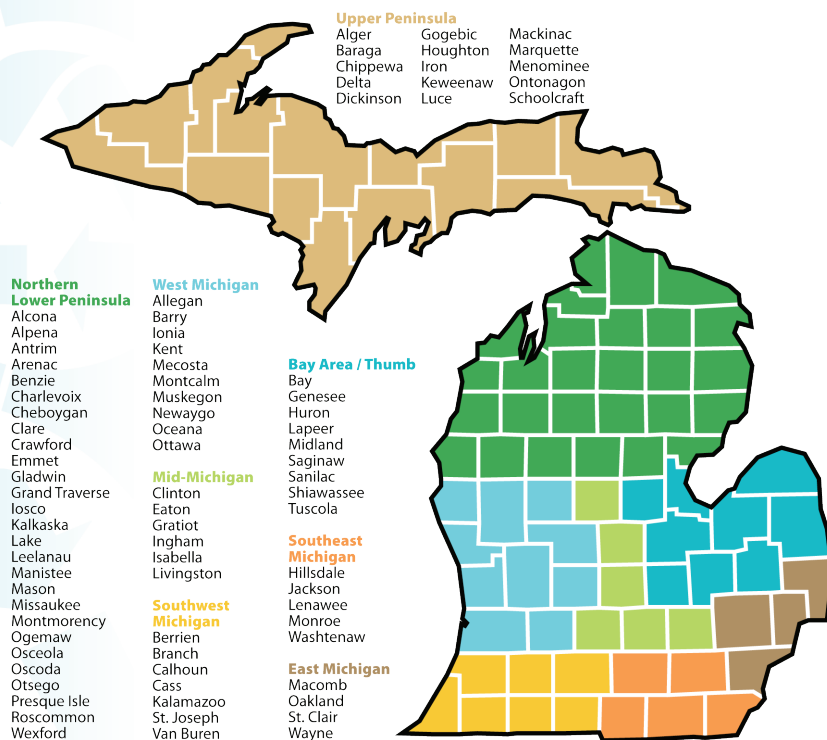
Earth Day 1970 launched the modern recycling movement in America. It unleashed a grass-roots movement that slowly became more mainstream, corporate and “professional” as it has evolved. As we approach 50, we need to ask ourselves some existential questions: What have we accomplished? How do we as a movement measure success? Are we even a “movement” anymore, or are we just a loose coalition of self-serving entities? Does recycling today simply salve our conscience as most of our behaviors and choices continue to ravage the planet?

STRONGER TOGETHER: THE VALUE OF AUTHORITIES IN CURBSIDE SERVICES, PROGRAMS AND EDUCATION

Katharine Tessin, Mid Michigan Waste Authority

The Mid Michigan Waste Authority provides its 34 member communities with efficient, cost-effective, and convenient curbside collection services, programming, and education. Learn about the history of the authority and understand the mechanics of the cooperative structure that allows it to achieve economies of scale to the benefit of its members. Understand all of the benefits and challenges of intergovernmental cooperation and collaboration through the authority model.

REGIONAL MEETINGS 11:10 A.M. - Noon



All eight MRC regions will be meeting.

In a state with diverse communities and populations, a “one size fits all” approach to resource management doesn’t serve every community. In an effort to give local communities and businesses a chance to move local and regional topics in the right direction and influence state issues, the MRC in 2016 recruited recycling leaders to gather regional stakeholders and facilitate conversations. The MRC identified and is working to serve eight regions across Michigan. During this session time, these eight regions, under the guidance of their regional director(s), will break out into separate groups in 4 different rooms to move their identified local and regional topics. Please check the region map to the left to see where you fit and join the conversation in your region to grow recycling.

NETWORKING LUNCH Noon - P.M. MRC ANNUAL MEETING & ANNUAL REPORT

Hear about MRC’s progress this year and plans for next.

EXHIBITION HALL DESSERT RECEPTION 1 - 3 P.M.

Enjoy a fine dessert while our conference exhibitors showcase their products and services. Relax a bit and mingle with conference attendees, speakers, sponsors, exhibitors, and invited guests.



WEDNESDAY, MAY 16

CONCURRENT SESSIONS 3:10 - 4 P.M.

CLOSING THE LOOP ON BLIGHT

Lauren Ross & Josh Widenaar, MSU

In assessing the feasibility of establishing a deconstruction economic hub in Muskegon in 2016, the MSU Center for Community and Economic Development found that although the Great Lakes Region has an abundant supply of materials available for reuse (in the form of abandoned and blighted homes), the supply chain for these materials is detrimentally underdeveloped. To better understand the state of the industry, MSU is currently conducting a material reuse sector study and working to better understand this key component in the life cycle of the built environment.

LEARN ABOUT SUSTAINABLE MATERIALS MANAGEMENT INNOVATIONS ACROSS FACILITIES & PROGRAMS

Morgan Turner, Mead & Hunt

Sara Kaplan, Wayne Co. Airport Authority

Understand what it took for the Detroit Metro Airport to step up to effectively manage waste and recycling throughout its facilities. Learn how knowledge of all the pieces of the puzzle contribute to the overall success of the program: waste audits, contracts, innovative ideas, liability, new audiences and communications, solid waste planning, organics, and partnerships. This session provides good information for planning and managing any kind of comprehensive program, especially with multiple facilities. Review findings from a nationwide study of airport waste management and learn how Detroit Metro coordinates staff, airlines, facilities, janitorial contractors, and other stakeholders to reduce waste, recycling, and divert food waste through composting and donations

THE RISKS AND REWARDS OF BATTERY RECYCLING

Paul Hernley, Battery Solutions

Tim Warren, Call2Recycling

Get needed guidance on providing battery collection and management solutions in both residential and commercial/industrial programs. Understand the risks and how to mitigate the risks associated with batteries, particularly lithium ion batteries, in-house and at transfer stations, MRFs, and even landfills. Learn what happens to batteries in the recycling process and how to effectively collect and recycle all different types of batteries.

THE DOLLARS AND SENSE OF PROGRAM IMPROVEMENTS

Jeff McKeen, SOCRRA

Anna Lynott, RRS

Growing your recycling program takes time, resources, patience and a little creativity. During the past two years, SOCRRA, the regional recycling authority in southeast Oakland County, has embarked on two major program improvements - converting its dual-stream MRF to single-stream, and distributing carts to 100,000 residents. The price tag for these improvements was well over 10 million dollars and required approval from its 12 member communities, careful planning to be organized, creative thinking for funding and financing, and a lot of perseverance. In addition to funding the program, SOCRRA was also faced with communicating the new program features to its residents. Join this session to learn about how they made their program expansion dreams a reality, and how their experience can help you with your next major capital project or program expansion.

CONCURRENT SESSIONS 4:10 - 5 P.M.

MAKING AGRICULTURAL PLASTICS RECYCLING POSSIBLE

Price Murphy, Revolution Plastics

Michigan's agriculture industry is a \$100 billion a year industry. And just like every other industry, plastics have become an important part of their operations. Learn about the use of plastics in the agriculture industry and about successful plastics collection programs in Wisconsin and Minnesota. See how public-private partnerships across the state working in conjunction with recycler, Revolution Plastics, could bring an ag plastic collection and recycling program to the farms, greenhouses, and boat dealers in 2018.

MORE SESSIONS ON NEXT PAGE

Join us!

*Network with
community leaders,
recycling professionals
& service providers*

*Share information &
ideas with colleagues*

*Learn fresh approaches
to your recycling &
organics challenges*

*Enjoy the excitement and
the buzz around recycling
& organics in Michigan*

COLLABORATING TO OVERCOME CHALLENGES

Matt Todd, RRS

Ashley Elzinga, Dart

In 2014, the Foam Recycling Coalition (FRC) was launched to support increased recycling of foodservice packaging made from foam polystyrene (i.e., cups, plates, bowls, clamshells, and cafeteria trays). Since its inception, FRC has provided nine grants totaling \$415,000 to a mix of public and private recycling industry operators to increase recovery of foam. Learn more about how Dart is supporting foam recycling right here in Michigan and how communities and organizations across the country are working together to increase the recovery of materials that were previously thought to be a challenge.

STREAMLINING EDUCATION ACROSS A REGION ON A BUDGET

Kate Melby, Emmet County

Sarah Archer, IRIS Waste Diversion Specialist

Of course education is key to the success of recycling programs, but it is often underfunded or not funded at all. Programs with little to no education budget can still make an impact with strategic thinking and partnerships. Learn practical ways to leverage existing resources to get the word out and do even more on a shoestring budget. Learn about some of the takeaways and tools that came from a five-county DEQ education grant project in Northern Michigan.

MAKING SPACE FOR SUSTAINABILITY: A KENT COUNTY CASE STUDY

Kristen Wieland, Kent County

Jennifer Porter, GBB

As part of its long-term vision to implement sustainable materials management strategies, Kent County, is actively pursuing the development of a 200-acre Sustainable Business Park to house facilities that recover discarded materials, reuse and recycle the recovered material, and convert non-recyclable material into intermediate products or to recover the energy value of those discards. Learn more about the development, upcoming waste stream and market analyses, the Master Plan design process, and construction of necessary public infrastructure.

APPETIZERS & COCKTAILS WITH THE EXHIBITORS 5 - 7 P.M.

Join exhibitors and attendees for one-last event in the Exhibition Hall. A progressive buffet and cash bar is the backdrop for networking and professional socializing. Have projects or programs in mind? Get your questions answered here.

MEET THE BOARD AT THE BAR 7 - 10 P.M.

More fun in Kalamazoo. Still want more networking and out-on-the-town fun? Join the MRC Board, members, and conferees for another night on the town. We'll be identifying a few cool places downtown where you can meet up! Look for the map at the Conference.

CONSIDER EXHIBITING & SPONSORING!

The 36th Annual MRC Conference attracts state and municipal recycling representatives, businesses that recycle, waste & recycling equipment suppliers, waste prevention, reuse, recycling, and composting professionals in the public and private sector, recycled product manufacturers and distributors, and other industry stakeholders. There are still a variety of opportunities to support the conference. Learn more on the MRC website.

The Exhibitor Booth Package includes an 8' dressed table, two chairs, and two, one-day passes.

\$550 MRC Members \$700 Non-Members

Register at www.michiganrecycles.org or call the office at (517) 974-3672.

EXHIBITION HALL

DEDICATED NETWORKING HOURS

Tuesday, 5/15
 Reception 5:00 to 7:00 P.M.
 Wednesday, 5/16
 Dessert & Coffee 1:00 - 3:00 P.M.
 Reception 5:00 - 7:00 P.M.

EXHIBITOR HOURS

Set-up Tuesday, 5/15 7:30 A.M. - Noon
 Open Tuesday, 5/15 5:00 - 7:00 P.M.
 Open Wednesday, 5/16 1:00 - 7:00 P.M.
 Take-down Thursday, 5/17 7:30 A.M. - Noon

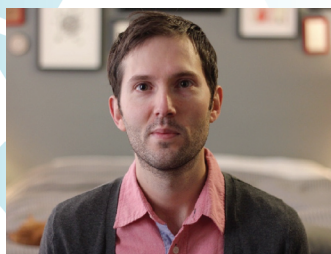


WEDNESDAY, MAY 16

**FUND
AFFAIR**



THURSDAY, MAY 17



Rhodes Yepsen

REGISTRATION OPEN 7:30 A.M.

BREAKFAST ROUNDTABLES 8 - 9:15 A.M.

Enjoy breakfast and engage with colleagues around key topics and issues in some early morning networking.

KEYNOTE PRESENTATION 9:15 - 10:15 A.M.

SCALABLE ORGANICS DIVERSION: GETTING TO ZERO WASTE WITH COMPOSTABLE PRODUCTS AND PACKAGING

Rhodes Yepsen, Biodegradable Products Institute

With the huge volume of food scraps going to landfills and incinerators, a logical place to start a diversion program is with the easy stuff — pre-consumer food scraps and food processing wastes. These are relatively simple to separate, collect and process, and are important to growing a budding organics management industry. But it will only make a dent. The next task is to scale up collecting post-consumer food scraps and food-soiled paper from front of the house businesses and residential streams. Successful collection with high participation and low contamination makes the use of compostable products and packaging critical. What is a compostable product? What are the considerations for municipalities, businesses, haulers, and composters?

Rhodes Yepsen is Executive Director of the Biodegradable Products Institute (BPI), North America's leading certifier of compostable products and packaging. A nonprofit, the BPI's goal is the scalable diversion of organic waste to composting, by verifying that products and packaging will completely break down in a professionally managed composting facility, without harming the quality of that compost. Yepsen also co-chairs the Compostable Products Task Force at the US Composting Council, where he formerly served on the Board of Directors.

CONCURRENT SESSIONS 10:30 A.M. - Noon

ALL THINGS COMPOSTING

Nicole Chardoul, RRS

Lindsey Walker, Emmet County

Cliff Walkington, Hammond Farms

Bill Whitley, Spurt Industries

Learn from a panel of Michigan composters about the most significant opportunities and challenges facing the industry today. Understand the requirements of successful collection and delivery of food waste and other organics to compliant facilities. Learn about the composting process, the value of compost as a soil amendment, and the local and regional markets that can benefit for the compost product. Be an agent for change by understanding the value of compost, the organics supply chain, and Michigan markets for the products.

A MARKET UPDATE

Dave Keeling, Steel Recycling Institute

Key Industry Representatives TBA

Despite the negative press to the contrary, recyclable materials are still being processed and successfully marketed throughout the country. Join a panel of industry experts as they discuss their insights into the trends and best practices for the materials that are being collected and processed from recycling programs across Michigan and the Great Lakes. Bring comments and questions for the extensive Q&A portion of the session.

GENERATIONAL COMMUNICATION: HOW TO FLEX YOUR COMMUNICATION STYLE

Crystal Young, West Shore Community College

Understanding different generations allows people to be flexible and “speak” the language of those around them. Join us for a brief overview of each generation and how they work best together. Learn how to modify your language and approach to mirror your audience, fostering more effective communication. Learn through this interactive session about how knowledge and understanding of a cohort's recycling habits and lifestyles should affect your communication style.

CONNECTING THE CURB TO THE MRF

Stephen Klemann, Republic Services

Tracy Purrenhage, IRIS Waste Diversion Specialists

Susan Mooney, EPA Region 5

Building understanding about the Material Recovery Facility (MRF) and its processes is a key to driving proper participation, reducing residuals, and increasing efficiencies. The Public-Private Partnership between Republic



THURSDAY, MAY 17

Leave the MRC Conference & DEQ State of Recycling with new connections, the knowledge necessary to take your recycling efforts to the next level, and the energy required to make it all work.

Services and RRRASOC provides a unique case-study that demonstrates the importance of getting it right and how they are initiating communications to eliminate problems at all levels. As part of work performed for Region 5 EPA, The Recycling Partnership explored how easily the public-private partnerships between MRFs and communities can be disconnected through several “clicks” on the internet. This failure to connect and communicate at very basic levels was studied via the Partnership’s MRFshed Report. Learn more about this report, EPA’s follow-up Fall Recycling Forum, and discuss strategies for connecting the curb to the MRF to the benefit of all.

LUNCH Noon - 1 P.M.

DEQ RECOGNITIONS & MRC AWARDS OF RECYCLING EXCELLENCE PRESENTATION

CONCURRENT SESSIONS 1 - 1:50 P.M.

THE ROLE OF ANAEROBIC DIGESTION IN ORGANICS MANAGEMENT

Chad Antle, Bioworks Energy

Dana Kirk, MSU

Michigan hosts many existing and planned commercial, agricultural, and wastewater treatment plant anaerobic digestion facilities that have the capacity to manage food and food processing waste. Understand the ideal feedstocks for AD systems and what it takes to make the system work; from the economics, labor force, and technical and feedstock resources perspectives. Learn about the barriers that limit the development of new AD capacity and see the path to success through utility grid access, landfill diversion legislation, technical resources, and desire to more productively use our organic wastes.

SECURING THE LOCAL SUPPLY CHAIN: A MIXED PLASTICS MARKET

Keith Bechard, ReVital Polymers

Michigan has ready access to a mixed plastics processor right across the Blue Water Bridge. ReVital Polymers is picking up where Entropex left off as a one source plastics market for the Great Lakes region. Learn more about the facility and its capacity to separate and process mixed plastics into manufacturing feedstock. Share your market challenges as ReVital explores the obstacles Michigan recycling centers face accessing the market and meeting demands. Join the conversation about securing the supply chain for regional markets.

DESIGN & PLACEMENT OF BINS & SIGNAGE FOR SORTING ACCURACY

Kate Binder, Bell's

While it may seem simple, recycling is really about assuring that the right stuff is placed in the right container. Learn about current research and best practices for designing waste collection systems that produce a high level of sorting accuracy. See simulated and real-life examples that illustrate the key factors that impact sorting accuracy, including: bin design, features, and location along with lid design, signage location, and signage content.

MOVING A COMMUNITY TO A SINGLE HAULER

Victor Cardenas, City of Novi

Nathan Mueller, City of Novi

Novi was the only City of its size in Oakland County that didn’t have a single hauler ordinance, requiring homeowners to negotiate contracts for curbside services on their own. But that changed recently. Learn about the circumstances under which Novi reevaluated the subscription-based collection system and decided to move to a single hauler system. Explore the challenges of making that change and the many benefits that ultimately made it possible.

PLENARY PANEL 2 - 3 P.M.

Q & A ON PROPOSED CHANGES TO MICHIGAN SOLID WASTE LAW

Panelists TBA

While we continue to wait for the results of stakeholder and Department of Environmental Quality work on revisions to Part 115, it is our expectation that we will know more about what will be proposed in legislation by the time the Conference rolls around. This plenary session will be designed to provide attendees with an opportunity to ask specific questions of a panel of experts that have been involved in the development process over the past 3-4 years. Plan to stay for this plenary session as we also expect to provide attendees with support resources that allow them to have informed conversations with local and state officials across Michigan. We’ll announce the experts on our panel as we get closer to the event.

REGISTRATION OPTIONS

ON-LINE <https://mirc.memberclicks.net/2018-conference-registration-form/>

MAIL registration form and payment to: MRC, PO Box 10070, Lansing, MI 48901

EMAIL scanned form with payment notification to kschalter@michiganrecycles.org

FAX form with payment notification to (517) 487-9541

OR **CALL** the MRC office at (517) 974-3672

REGISTRATION PREFERENCES	MEMBER by 4/30	MEMBER after 4/30	NON MEMBER by 4/30	NON MEMBER after 4/30	\$ AMOUNT	REQUIRED INFORMATION
Full Registration (Tues-Thurs) Includes your choice of tours or training, meals, DEQ State of Recycling, conference, and networking events	<input type="checkbox"/> \$350	<input type="checkbox"/> \$375	<input type="checkbox"/> \$450	<input type="checkbox"/> \$500		Tuesday (check selections) <input type="checkbox"/> Tour A - WestRock & Kellogg OR <input type="checkbox"/> Tour B - Schupan EScrap & Bell's OR <input type="checkbox"/> Training 1 - Operations & Economics of the MRF OR <input type="checkbox"/> Training 2 - Developing & Funding a Sustainable Residential Recycling Program
Tuesday only Includes your choice of tours or training, lunch, DEQ State of Recycling, and evening networking events	<input type="checkbox"/> \$125	<input type="checkbox"/> \$150	<input type="checkbox"/> \$200	<input type="checkbox"/> \$225		
Tuesday Tour or Training only Includes your choice of tours or training and lunch	<input type="checkbox"/> \$75	<input type="checkbox"/> \$100	<input type="checkbox"/> \$150	<input type="checkbox"/> \$175		
Tuesday DEQ State of Recycling only	<input type="checkbox"/> \$75	<input type="checkbox"/> \$75	<input type="checkbox"/> \$85	<input type="checkbox"/> \$85		
Wednesday only Includes breakfast, keynote, sessions, lunch, exhibits, and evening activities	<input type="checkbox"/> \$175	<input type="checkbox"/> \$200	<input type="checkbox"/> \$250	<input type="checkbox"/> \$275		
Thursday only Includes breakfast, keynote, sessions, and lunch	<input type="checkbox"/> \$150	<input type="checkbox"/> \$175	<input type="checkbox"/> \$225	<input type="checkbox"/> \$250		
<i>Interested in bringing a group for a day at the conference? Call the MRC office for special group rates.</i>	TOTAL PAYMENT					

DIETARY NEEDS: Vegetarian Other _____

NAME & TITLE _____

COMPANY/ORGANIZATION _____

ADDRESS, CITY, STATE, ZIP _____

PHONE, FAX _____

EMAIL (REQUIRED FOR CONFIRMATION) _____

PAYMENT METHOD Please check one:

Check, make checks payable to Michigan Recycling Coalition

Visa Mastercard Discover American Express

CARD NUMBER _____ EXPIRATION DATE _____

NAME ON CARD _____ SECURITY CODE _____

BILLING ADDRESS _____ ZIP CODE _____

SIGNATURE OF CARDHOLDER _____

CANCELLATION POLICY: SUBSTITUTIONS ARE ENCOURAGED.
REFUNDS SUBJECT TO \$75 CANCELLATION FEE PER REGISTRANT. NO REFUNDS AFTER APRIL 30, 2018



Kalamazoo Radisson

100 W Michigan Ave.
Kalamazoo, MI 49007
(269) 343-3333

Reserve room using the phrase "Michigan Recycling Coalition 2018" by April 30, 2018 to receive the MRC Conference discount.



PO Box 10070, Lansing, MI 48901
(517) 974-3672

www.michiganrecycles.org