



MICHIGAN DEPARTMENT OF
ENVIRONMENT, GREAT LAKES, AND ENERGY

Ready. Set. Plan.

Michigan Recycling Coalition Conference

May 16, 2019

COUNTY PLANNING HISTORY

County Planning History

- Developed late 1980's early 1990's
- Perceived Crisis
 - Focused on Disposal Capacity (10-years)
 - Siting preempts local zoning
 - Import/Export Authorizations
- Defines recycling/composting and other local diversion programs (Not Required)

County Planning History

- Challenges
 - A lot of disposal capacity (27 years)
 - Some Plans do not have a siting process
 - Some Plans limit the types of facilities that can be sited
 - Site-or-Source Separated Facilities are not included
 - Not required to determine “other” types of capacity

County Planning History

- Last round 1997
 - Handful of counties have Amended
- Laws haven't changed to meet new focus

The State of Landfilling in Michigan



- 2018 a total of **52,445,215** yd³ disposed
 - 1,840,523 cubic yards increase since 2017 (~3.6%)
- Reported Remaining Capacity: **537,531,195** yd³

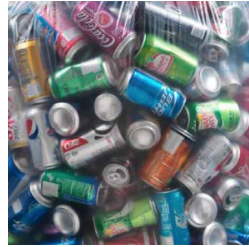
Planning = Success



[This Photo](#) by Unknown Author is licensed under [CC BY-SA-NC](#)

The State of Recycling In Michigan

Estimated Recycling Rate: 15.3% (~1.5 million tons)



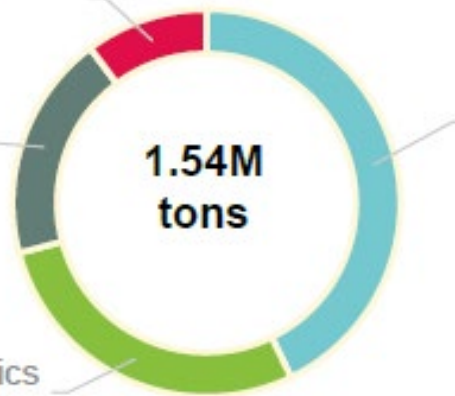
Container Deposits
10.2%



Traditional Collected
Materials
42.8%



Take-back Program
Materials
18.9%



Organics
28.0%



Planning For the Future of Waste

PAST: Waste Management



- **Integrated system**
- **Minimization**
- **Recycling**
- **Sustainable approach**

[This Photo](#) by Unknown Author is licensed under [CC BY-NC-ND](#)

FUTURE: Materials Management



- **Landfill capacity**
- **Safe & long-term disposal**

MATERIALS MANAGEMENT PLANNING

HB6483

Materials Management Plans



Materials Management Plans

Overview

- Identify **all** materials management facilities & capacity
- Focus on **utilization** capacity
- Promote **regional** planning
- Develop **goals** for utilization and recycling
- Provides for more local control for siting of NEW facilities
- Annual MMP **Grants**
- **NO** import/export authorization requirement

Materials Management Facility

- Disposal areas
 - Landfills
 - Processing & Transfer Stations
- Materials utilization facilities
 - MRFs
 - Compost Facilities
 - Anaerobic Digesters
- Diversion centers



Materials Management Plans – WHAT?

Planning area:

- Determine population, economic base, land use
- Identify all materials management **options**
 - Materials Management Facilities (MMF)
- Inventory the **capacity** of the MMF
- Determine current **recycling rate** & **recycling access**
- Overview of the **transportation** infrastructure

WHAT'S THE STARTING POINT??

Materials Management Plans – WHAT?

Planning area:

- Determine **Materials Utilization Goal (MUG)**
- What steps are needed to:
 - Increase municipal solid waste (MSW) recycling rate
 - Increase recycling access – Benchmark Recycling Standard
 - Achieve other goals set by the County

WHAT ARE THE GOALS??

Materials Management Plans – HOW?

Planning area:

- Develop **Implementation Strategy**
 - MUG – Action Steps; Objectives
- Ensure MMF needed are able to be **developed**
 - **Siting** and development of new MMFs
 - Local regulations (MUFs)
 - Siting Criteria for Disposal Areas

HOW TO ACHIEVE THE GOALS??

MMP Implementation Strategy

- Show **progress** towards MUGs
 - Reduction of **organic** materials being disposed
 - Reduction of **recyclable** materials being disposed
- MMF's annual report to EGLE
- Description of MUG **resources** needed
- How Benchmark Standards will be met

Materials Utilization Goal (MUG)

- Benchmark Recycling Standard
- MSW Recycling rate
- Other MUGs set by the planning area



Materials Utilization Goal (MUG) is a measurable objective and specific set of goals, determined by a planning area which will be used to demonstrate progress toward material diversion from disposal areas.

Benchmark Recycling Standards (BRS)



ACCESS

- **2022** – 90% of single-family dwellings in urbanized areas have access to curbside recycling
- **2025** – 90% of single-family dwellings in areas with >5,000 residents have access to curbside recycling
- **2028** – In counties with a population <100,000 residents: there is at least 1 drop-off location for every 10,000 residents without access to curbside recycling at their dwelling
- **2028** – In counties with a population >100,000 residents: there is at least 1 drop-off location for every 50,000 residents without access to curbside recycling at their dwelling

EDUCATION

- Recycling awareness & recycling access options

MUG Example



Increase School Recycling

OBJECTIVES



- Increase awareness of the WHY
- Determine starting point & progress
- Design a best program for the school

MUG Example



Increase School Recycling

**SHOW
PROGRESS**



- Increase awareness of the WHY
 - Met with school administration
 - Held school assembly(ies)



- Determine starting point & progress
 - Surveyed materials needing managed
 - Surveyed progress at 6 months & 1 year

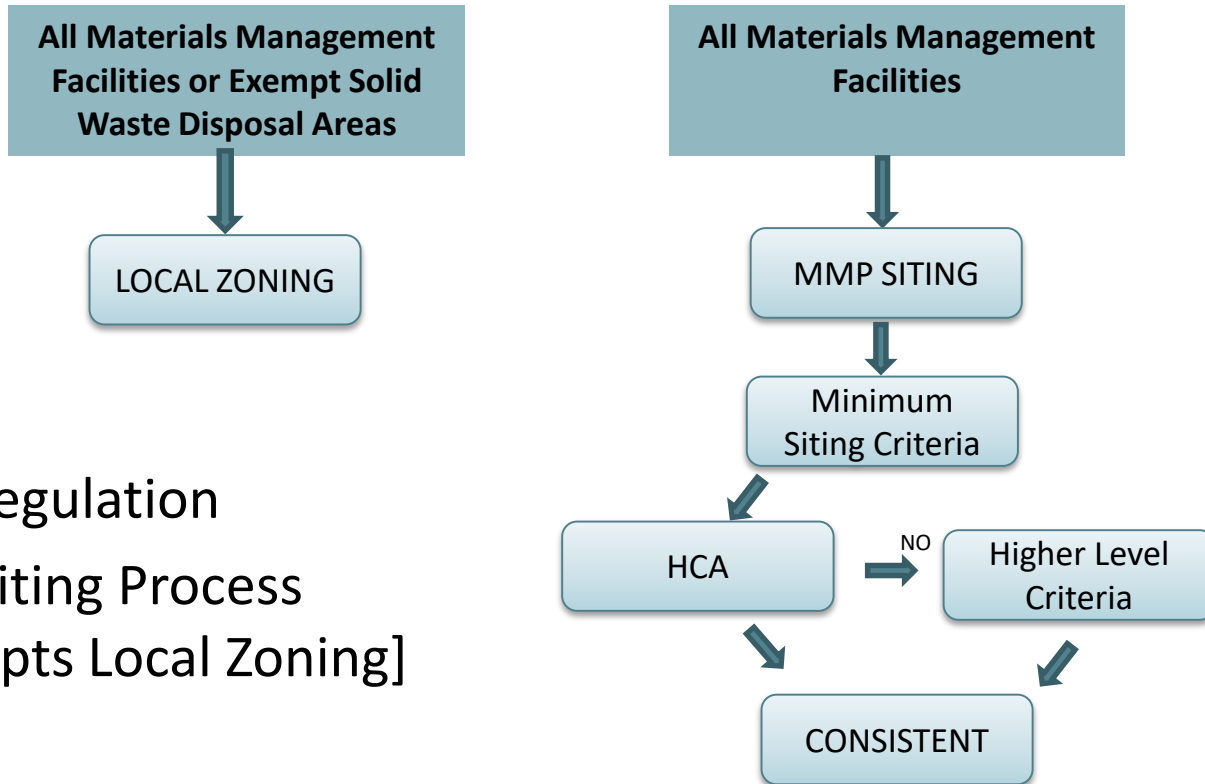


- Design a best program for the school
 - Created GreenTeam
 - Determined types of materials, space needed, education

Materials Utilization Goal

- CBC certify progress towards MUGs
 - Every 2 years after EGLE approval of MMP
 - Eligible Grant:
 - Growing Recycling Access & Voluntary Participation Program \$\$
- County **annually** meet MMP Grant requirements to receive \$\$ (automatic if progress is shown)

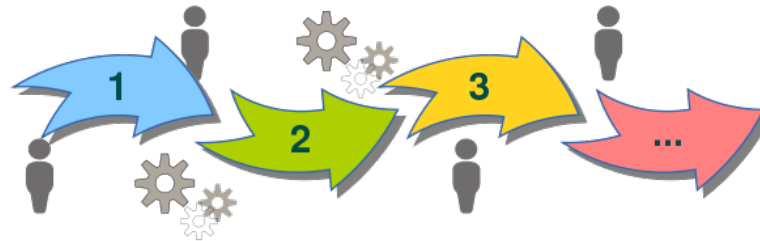
Materials Management Facility Siting



- Local Regulation
- MMP Siting Process [Preempts Local Zoning]

Materials Management Plans

→ The Process ←



[This Photo](#) by Unknown Author is licensed under [CC BY](#)

Materials Management Plans – HOW?

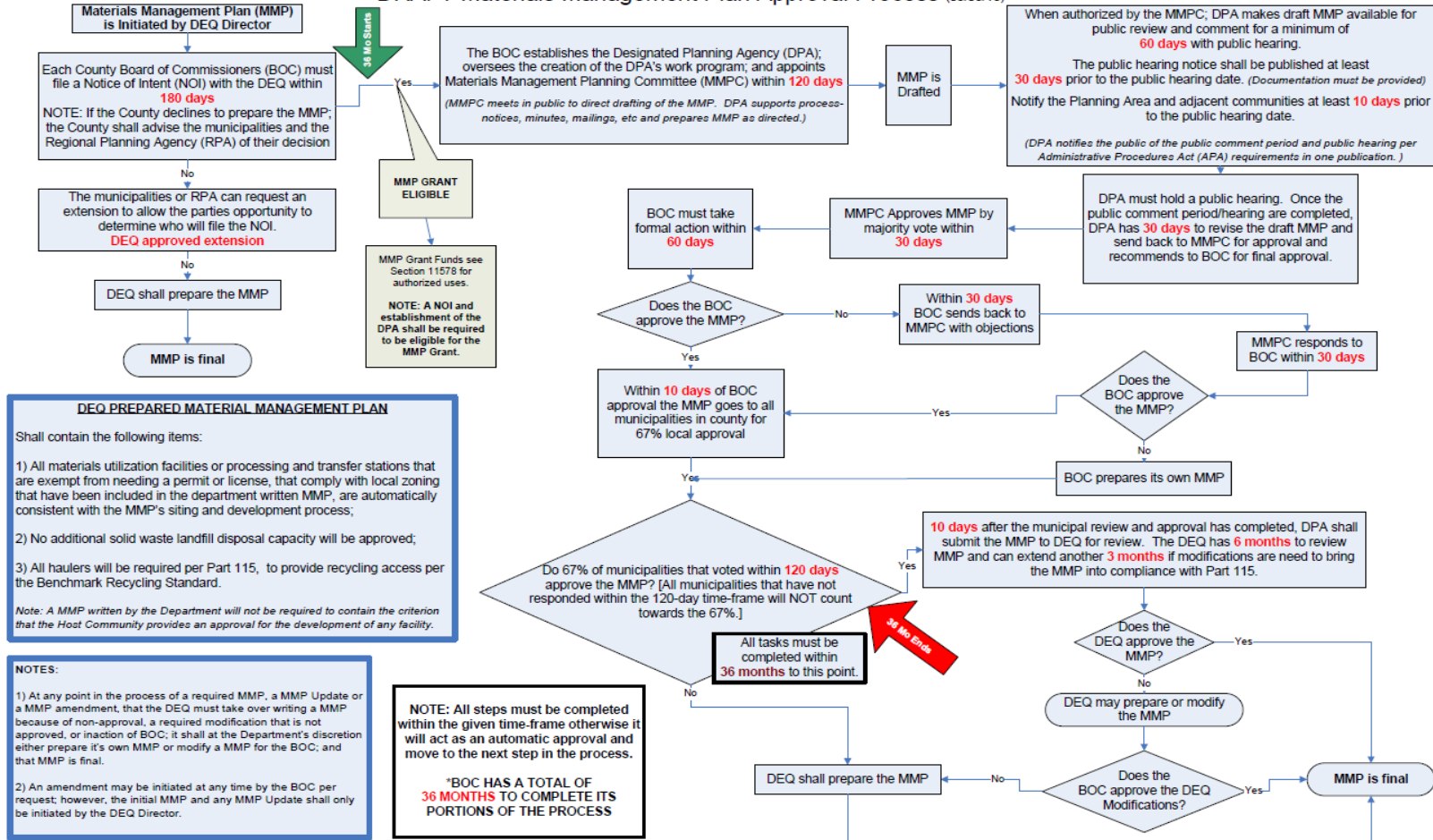
MMP Approval Process

- County/CBC → NOI
 - Eligible for MMP Grant \$
- 36 Months to Complete Approval Process
 - Default mechanisms/Timeframes
- MMPC → CBC → 67% Municipal Approval → EGLE

HOW TO GET THE MMP DONE??

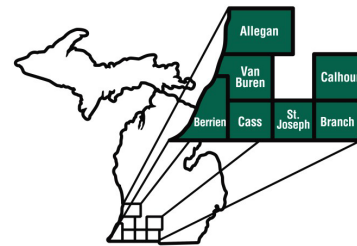
MMP Approval Process

DRAFT Materials Management Plan Approval Process (03/05/18)



Multi-County MMP

- CBC of planning areas form authority or enter into agreement to ensure compliance with the statute
- Include a process for siting in compliance with the statute



Materials Management Plans – WHO?

MMP Committee - 11 members

- 1 Solid waste disposal facility operator
- 1 Managed materials hauler
- 1 Materials recovery facility operator
- 1 Compost or other organics facility operator
- 1 Waste diversion, reuse, or reduction facility operator
- 1 Environmental interest group
- 1 County (Elected official)
- 1 Township (Elected official)
- 1 City or Village (Elected official)
- 1 Individual that generates a managed material
- 1 Regional planning agency
- OPTIONAL: An adjacent community business representative

Multi-County MMP: Standard MMPC plus the following may be appointed per additional county

- 1 Elected county or municipal government official
- 1 Business that generates managed materials within the planning area

Materials Management Plans – WHO?

MMP Key Parties

- Board of Commissioners
 - Responsible for all aspects of the MMP
- Designated planning agency (DPA)
 - Administers & prepares the MMP through the direction of the MMPC
- Materials management planning committee (MMPC)
 - Identifies planning area priorities & directs the DPA for MMP preparation

WHO'S IN CHARGE OF WHAT??

Materials Management Plans – WHO?

NEW Responsibilities of Parties

- **CBC**
 - Automatically responsible for Plan implementation (**NEW**)
 - Responsible for either siting any needed facilities or finding alternate materials management facilities outside of the planning area (**NEW**)
 - Planning Grant money will flow through the county (or counties, if multi-county) (**NEW**)

Materials Management Plans – WHO?

NEW Responsibilities of Parties

- **DPA**
 - Nothing NEW
- **MMPC**
 - Approves the DPA work program (**NEW**)
 - Advises county (or counties, if multi-county) and municipalities (**NEW**)


EGLE Prepared MMP

- All MUFs or exempt disposal areas that comply with local zoning that has been included in the department written MMP, are **automatically consistent** with the MMP's siting process.
- **No** additional solid waste landfill **disposal capacity** will be approved.
- All haulers will be required to provide **recycling access** per the benchmark recycling standard.

MMP Update Requirements

- Review MMP every 5 years
 - Ensure compliance with statute
 - Evaluate progress towards meeting your Implementation Strategy
- CBC submit either
 - NOI to amend
 - Statement amendment not needed to advance MUGs

MMP Amendments – HOW?

- Initiated by the EGLE
 - New legislation
 - Different Policy
 - MMPs no longer in compliance with laws
- Initiated by the CBC 
 - File NOI Follow Process
 - IF increases materials utilization or recovery of managed materials; EGLE can approve without full amendment process

MMP Grants – HOW?

- Covers local costs for preparing, implementing, and maintaining MMPs
- \$60,000 for each county
- \$10,000/county for multi-county planning
- \$0.50 per capita up to \$300,000
 - Cover the higher upfront costs of initiating the new planning process
 - Available in the first year

Additional Support

- **Recycling Markets Program**
 - Not tied to MMP
- **Local Recycling Innovation Program**
 - Not tied to MMP
- **Recycling Access & Voluntary Participation**
 - MMP approval needed
 - Progress needed

RESOURCE DEVELOPMENT

Useful Resources Handout



Stay up-to-date with the EGLE, Materials Management, and MMP pages!



Michigan Regional Environmental Contact List

- In progress
- a 'live', comprehensive list for planning agencies to assist in the development of goals



Funding Mechanisms



- Will provide DPA's a comprehensive list of funding opportunities
- In progress



Additional Funding Opportunities for Municipalities and Counties

Infrastructure and Program Grant

- RFP designed to *collect data for counties and municipalities*



- a ‘snapshot’ of demographics and infrastructure capacity BY municipality

- ‘blueprint’ for developing future materials management plans



Infrastructure and Program Grant

- Purpose

- Data consistency
- Will provide ‘database’ information by municipalities
- Access to recycling and organics

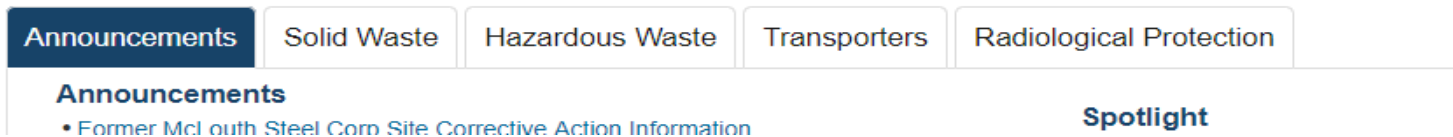


Infrastructure and Program Grant

- Capacity
 - Current Infrastructure and capacity will include materials collection, waste diversion, hauling, processing, education programs, access and availability, and end-use markets
- Scope
 - all materials recycled, composted, reused, landfilled, incinerated, or otherwise utilized or disposed
 - including residential, commercial, multifamily, on-the-go public space, and industrial sources of managed materials.

For More Information

- SIGMA on DTMB Bid Site (Vendor Self Service)
 - www.Michigan.gov/SIGMAVSS
- DPA list in Email
- Solid Waste Announcement Page



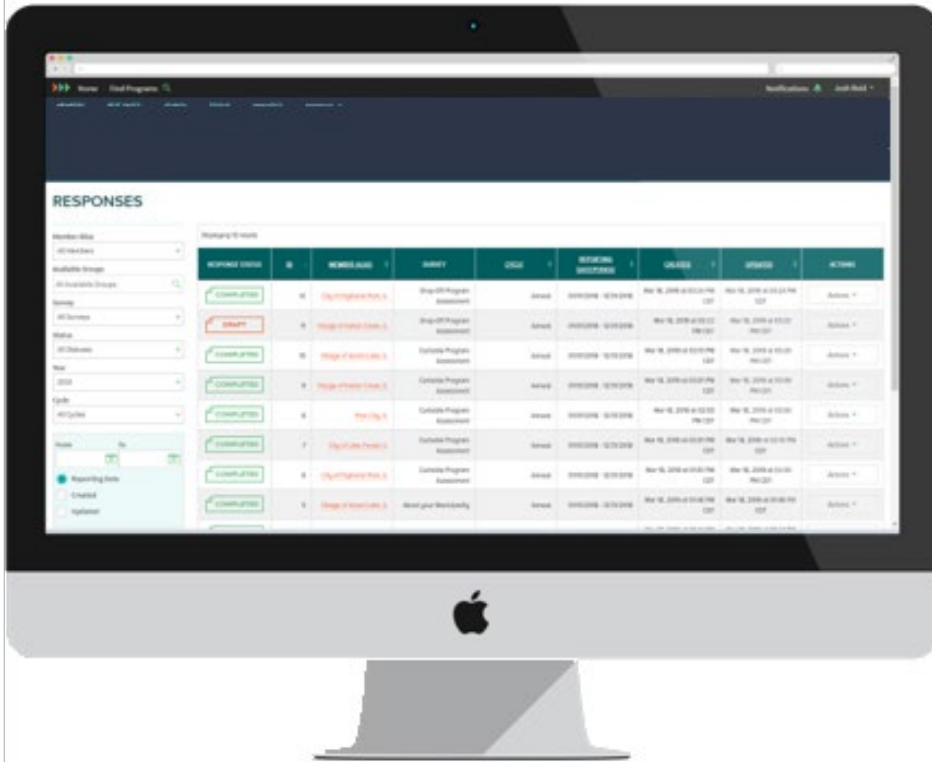
- Gov Delivery System
- Signup sheet to receive email

MMP TEMPLATE

Online Template

- Fillable form
- Intelligent design
- Consistent format
- Centralize data
- Auto populate tables
- Living document

How it works



ACCOUNT

Login to website to enter and retrieve data about planning area.

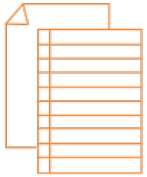
TRACK PROGRESS

See progress in each section and due dates.

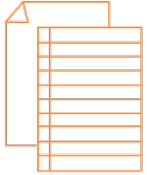
EGLE ASSISTANCE & REVIEW

EGLE will be able to answer questions, comment on sections and streamline approval process.

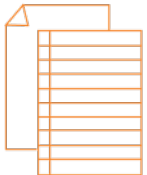
Example Sections



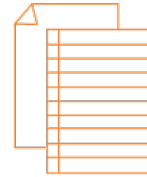
Municipalities



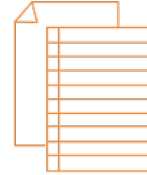
Demographics



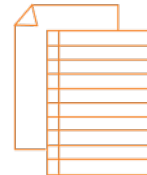
Infrastructure



Organics



Recycling




Solid Waste

Online Planning Template

ABOUT YOUR RESIDENTIAL SINGLE-FAMILY CURBSIDE RECYCLING PROGRAM

Does your municipality provide curbside recycling to residents in single-family households? *

- Yes, single-family curbside recycling collection is provided by our municipality 
- No, single-family curbside recycling collection is provided by a private (open market) system
- No, single-family curbside recycling collection is not provided to residents
- I don't know

What is the collection frequency for your curbside recycling program? *

- Weekly
- Every other week (e.g. every 2 weeks)
- Other

Does your municipality have an ordinance in place to encourage recycling? *

- Yes
- No
- I don't know

What type of ordinance(s) does your municipality have in place? *

- We have a local enforced material ban
- We have a local statute for mandatory recycling
- Other

PAPER TYPES	YES	NO
Books *	<input type="radio"/>	<input type="radio"/>
Boxboard / Paperboard *	<input type="radio"/>	<input type="radio"/>
Cardboard *	<input type="radio"/>	<input type="radio"/>
Cartons / Aseptic containers / Drink boxes *	<input type="radio"/>	<input type="radio"/>
Catalogs *	<input type="radio"/>	<input type="radio"/>
Magazines *	<input type="radio"/>	<input type="radio"/>
Mail *	<input type="radio"/>	<input type="radio"/>
Newspaper *	<input type="radio"/>	<input type="radio"/>
Office paper *	<input type="radio"/>	<input type="radio"/>

Auto Generated Table

Community	Newspaper	Cardboard	Magazines	Office Paper	Phone Books	Boxboard	Glass	Aluminum/Tin Cans	Scrap Steel	#1-2 Plastics	#3,4,5,7 Plastics	#6 (PS) Plastics	Plastic Bags	Styrofoam	Drink/Milk Cartons	Textiles	Ceramics	Motor Oil	Oil Filters	Auto Batteries	Household Batteries	White Goods	Yard Waste	
Town A	•	•	•	•	•	•	•	•	•	•	•	•			•							*	•	
Town B	•	•	•	•	•	•	•	•	•	•	•	•											*	
Town C	•	•	•	•	•	•	•	•		•												•	•	
Town D	•	•	•	•	•	•		•		•	•	•												
Town E	•	•	•	•	•	•	•	•	•	•	•	•	•										•	•

Streamline Process



Online Planning Template

- Identify contractor
- Develop tool
- Pilot program
- Launch website



USEFUL TOOLS

Resources



Managing and Transforming Waste Streams: A Tool for Communities

CONTACT US

SHARE



Helping Communities Plan for Less Waste

- [Learn About the Tool](#)
- [Go to the Tool](#)
- [Go to the Policy and Program Impact Estimator](#)
- [Browse Examples By Topic](#)



Waste is a valuable resource. Communities can recover the lost value of material discards by setting up systems for reuse, recycling, and composting.



<https://www.epa.gov/transforming-waste-tool>

EPA Managing and Transforming Waste Streams Tool

- Measures communities can employ to reduce waste and recover materials
- Includes example ordinances, policies, programs, contracts, outreach & technical assistance, and infrastructure development

EPA Managing and Transforming Waste Streams Tool

- Goals and Planning (ex: zero waste)
- Local Government Operations
- Curbside Collection
- Food Waste Programs
- Assistance to Businesses and Institutions
- Infrastructure and Markets
- Community Outreach and Education
- Product Stewardship
- Construction and Demolition Debris
- Disposal Restrictions or Disincentives

Example: Food Waste Programs

Food Waste Programs

- [Municipal Food Waste Collection](#)
- [Food Waste Drop-Off](#)
- [Backyard/Neighborhood Composting](#)
- [Food Pickup for Donation](#)
- [Food Gleaning for Donation](#)
- **Food Waste Outreach and Prevention**
 - [Vendors](#)
 - [Consumers](#)
- [Food Waste Collection Program with Private Haulers](#)
- [Food Waste Pickup for Composting](#)
- [Mandatory Subscription - Organics](#)
- [Mandatory Composting](#)



Stay up-to-date!

- Website
- DPA list
- Gov Delivery

<https://www.michigan.gov/egle>

Stay Connected



Environmental Calendar, Events and Training

Contacts

Environmental Assistance Center
Do you have an environmental question or concern? Call our Environmental Assistance Center at 1-800-662-9278.

Staff Directory
Media Contact
EGLE FOIA Information
Report an Emergency

Our Performance

OPEN Michigan
Scorecard

Documents

Reports
Forms
Publications
Maps & Data

Regulations

EGLE Policies
Laws & Rules
Permits
Regulatory Reinvention
Boards and Advisory Groups

Materials Management Plan – WHY?

Michigan CAN DO BETTER!



Michigan Department of
Environment, Great Lakes, and Energy

800-662-9278

Michigan.gov/EGLE



Follow us at: Michigan.gov/EGLEConnect