

Benchmarking Materials Management for Progress

Michigan Recycling Coalition
Virtual Conference
May 7, 2020

Today's Presenters



Christina Miller
Solid Waste Planning Specialist
EGLE



Anna Lynott
Senior Consultant
RRS

Agenda

- Policy Update
- Materials Management
- M3 Roadmap
- Mega Data
- Questions

Poll #1



Policy Update

- Solid Waste Policy [2017]
- GRC/SWSAP Reports [2017]
 - SWRA (Solid Waste & Recycling Advisors)
- Part 115 Amendments [2020??]



www.Michigan.gov/swra

The Transition

PAST: Waste Management

- **Integrated system**
- **Minimization**
- **Recycling**
- **Sustainable approach**



This Photo by Unknown Author is licensed under [CC BY-NC-ND](#)

FUTURE: Materials Management

- **Landfill capacity**
- **Safe & long-term disposal**



**MATERIALS
MANAGEMENT
PLANNING**



M3 ROADMAP
MICHIGAN MATERIALS MANAGEMENT

OTHER PROGRAMS

**AUTHORIZATIONS &
REPORTING**

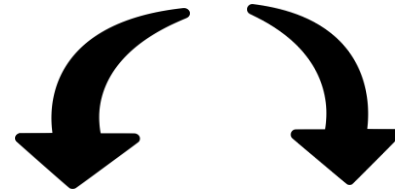
DATA COLLECTION

The Roadmap



M3 ROADMAP
MICHIGAN MATERIALS MANAGEMENT

Data Collection



Gap Analysis

**Authorizations
Programs**



Materials Management Planning

Why start with data?

- Data collection is important
 - Builds the foundation
 - Creates regular reporting opportunities
 - Never been done before by the state at this level



Planning Now

- What can you do now?
 - Bring Planning Committees together
 - Engage LUGs
 - Help with the Data collection
 - Participate in webinars/trainings
 - EGLE Listserv
 - EGLE Staff



[This Photo](#) by Unknown Author is licensed under [CC BY](#)

Outcome of Survey of DPAs

- What County(ies) do you represent?
- Do you have an active solid waste or recycling committee within your County/Region?
- Do you currently have the time/capacity to engage in solid waste/materials management planning activities?
 - If so, how would you most likely engage? (select all that apply)
 - Web Meetings
 - Listserv
 - Emails
 - Phone Meetings
 - Trainings
- Are there specific items that you would like more information about? (please describe)

MEGA DATA

Statewide Data Collection Project

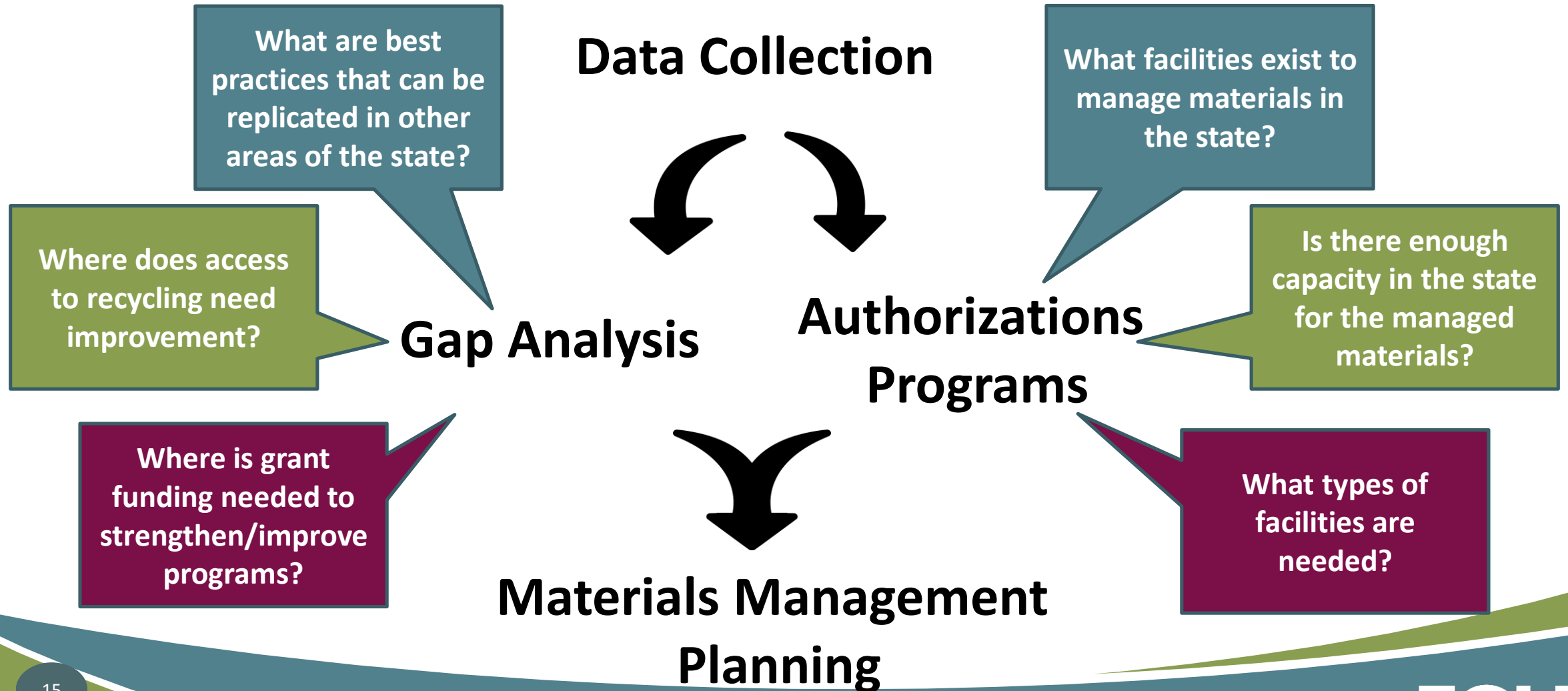
Data Collection Project

- Calling it **MEGA Data!**
- The task – collect information about materials management activities in all 83 counties across the state
- Target audiences
 - Municipalities
 - Counties
 - Service Providers
 - Facilities

Mega Data Deliverables

- Summary of materials management collection programs by municipality by county
- Total residential waste generated, recycling, and composted by each municipality for each county
- Waste-shed maps
- Capacity maps for each material category
- Access maps for each county
- Facility Descriptions
- Facility description and geographic coordinates for each facility
- Infrastructure maps by facility type
- Integration of Facility Descriptions into State Systems
- Market-shed maps
- Description of Secondary materials processors/brokers
- Description of End use markets that are managing recycling materials in manufacturing

Why does data matter?



How will data be collected?

- Existing information at EGLE
- “Desktop” research
- Surveys
- Direct outreach



When will data be collected?

- “In the field” data collection starts in May and runs through September



Today's Focus

Municipal and County Data Collection

Municipal Survey



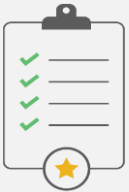
Benefits of Participation for Municipalities



Participation is easy & free



Powerful analytics



Standardized surveys



Benchmark results



Monitor annual trends



Improve programs



Supports County Planning

Joining the MMP™ (eMMP in Michigan)

Simple application

- Specifically for municipalities
- Authority to represent their municipality
- Prevents duplicates

Joining the Municipal Measurement Program

Thank you for applying. The application process is designed to protect the integrity of aggregate municipal data by confirming that all applicants meet the eligibility criteria for participation. We are aiming to only allow one representative per municipality.

Name of Municipality *

E.g. City of Chicago

Please include type of municipality in the name. E.g. Town of Abington, Aberdeen Village

Address *

Address Line 1

Address Line 2

City

State / Province

County

Zip / Postal Code

Country

Name *

First

Last

Title/Position *

Phone *

Email *

Completing the Surveys

Three core surveys:

1. About Your Municipality
2. Residential Curbside Program Assessment
3. Residential Drop-off Program Assessment

The image displays three overlapping survey forms from Re-TRAC CONNECT. The top form is titled "ABOUT YOUR MUNICIPALITY" and includes a section for "ABOUT YOUR MUNICIPAL CLASSIFICATION" with radio button options: Urban (urbanized area of 50,000 or more), Small Urban (urbanized area of 10,000 to 49,999), Suburb (shares a border with an urbanized area), Suburb (does not share a border with an urbanized area), Rural (does not share a border with an urbanized area), and Other. It also has a text field for "What is the population of your municipality?" and a question "Does your municipality provide curbside collection services?" with a "Yes" radio button option. The middle form is titled "RESIDENTIAL CURBSIDE PROGRAM ASSESSMENT SURVEY" and includes a "NEED HELP?" section with a link to "U.S. Census American Fact Finder" and a question "Residential curbside municipal collection services are provided to which of the following types of residential units?" with checkboxes for Single unit (detached or attached), 2 units, 3 - 4 units, 5 - 9 units, and Mobile homes. The bottom form is titled "RESIDENTIAL DROP-OFF PROGRAM ASSESSMENT SURVEY" and includes a section for "ABOUT DROP-OFF COLLECTION IN YOUR MUNICIPALITY" with a red text box stating "This survey is designed to collect information about the material drop-off services your municipality offers to residents. Please provide information only about drop-off locations that are managed directly by your agency (do not include information about drop-off locations managed by a 3rd party)." It has three questions with text input fields: "What is the total number of municipally run drop-off sites in your municipality?", "How many municipally run drop-off sites are staffed?", and "What is the approximate number of residents served by your municipality's drop-off sites?". At the bottom, it has a table header for recording material categories and the number of sites that accept them.

About Your Municipality

Types of data collected:

- Municipal classification
- Demographic information
- Waste management challenges
- Education and outreach programs

Re-TRAC
CONNECT

ABOUT YOUR MUNICIPALITY

ABOUT YOUR MUNICIPALITY

What is your municipal classification? *

Urban (urbanized area of 50,000 or more people)

Small Urban (urbanized area of less than 50,000 people)

Suburb (shares a border with an urban area)

Suburb (does not share a border but it's within 30 miles of an urban area)

Rural (does not share a border and is not within commuting distance of an urban area)

Other

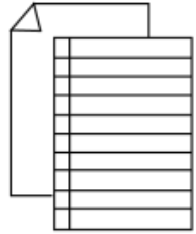
What is the population of your municipality? *

ABOUT MUNICIPAL PROGRAMS

Does your municipality provide curbside collection services to residents?
*Includes any of the following: municipal solid waste, single-family recycling, multi-family recycling, and/or organics collection **

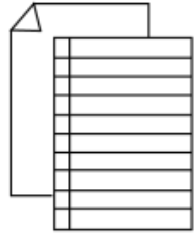
Yes

Curbside Program Assessment



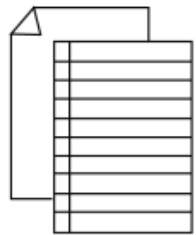
Page 1

About **curbside collection** in your municipality



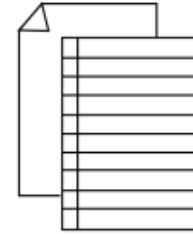
Page 2

Residential **solid waste collection** program



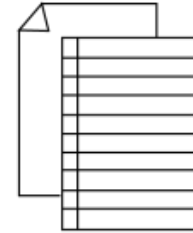
Page 3

Residential **single-family curbside recycling** program



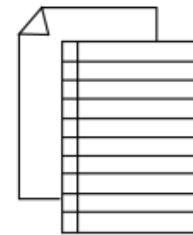
Page 4

Residential **multi-family recycling** program



Page 5

Residential **organics collection** program



Page 6

About the **person completing the survey**

Drop-off Program Assessment

Types of data collected:

- Number of drop-off sites
- Materials accepted
- Staffed vs. non-staffed locations
- Tonnage information

Re-TRAC
CONNECT

RESIDENTIAL DROP-OFF PROGRAM ASSESSMENT SURVEY

ABOUT DROP-OFF COLLECTION IN YOUR MUNICIPALITY

This survey is designed to collect information about the material drop-off services your municipality offers to residents. Please provide information only about drop-off locations that are managed directly by your agency (do not include information about drop-off locations managed by a 3rd party).

What is the total number of municipally run drop-off sites in your municipality? *

How many municipally run drop-off sites are staffed? *

What is the approximate number of residents served by your municipality's drop-off sites? *

Please indicate below how many drop-off sites collect each type of material category (if your drop-off sites do not collect material from one of these categories, enter 0) *

MATERIAL CATEGORY	NUMBER OF DROP-OFF SITES THAT ACCEPT THIS TYPE OF MATERIAL CATEGORY
-------------------	---

The Importance of Data Verification

RRS staff will:

- Review all submitted survey responses and check numeric data.
- Contact municipalities when numerical responses need further clarification.
- “Sign off” on survey responses by marking them as “**Verified**”.
- Coordinate data verification with State and Regional agencies using the eMMP for official reporting.

Analytical Reports



Program
Recommendations



Economic Benefits
of Recycling



Environmental
Benefits



Tonnage Analysis



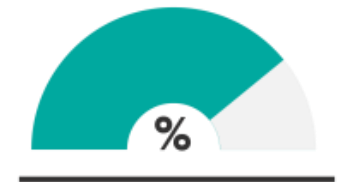
Program Performance
Benchmarking



Annual Trend



Lbs Per
Household



Annual
Diversion Rate

Economic Benefits of Recycling (report)



Total Recycling (Tons)

21,267.0

Based on voluntarily reported data including curbside single-family recycling, multi-family recycling, curbside organics, drop-off recyclables, drop-off organics, drop-off household hazardous waste, drop-off electronic scrap, drop-off scrap tire, drop-off scrap metal/white goods, drop-off construction & demolition, and public space recycling.

Convert recycling tons into **estimated job creation, attributable wages, and tax revenue.**



Estimated Job Creation Impact

33

1.57 jobs per 1000 tons of material recycled



Estimated Wages Attributable

\$1,616,930

\$76,030 per 1000 tons of material recycled



Estimated Tax Revenue Attributable

\$299,886

\$14,101 per 1000 tons of material recycled

County Survey

Accessible via eMMP

Joining the MMP™ (eMMP in Michigan)

Simple application

- Specifically for municipalities
- Authority to represent their municipality
- Prevents duplicates

Joining the Municipal Measurement Program

Thank you for applying. The application process is designed to protect the integrity of aggregate municipal data by confirming that all applicants meet the eligibility criteria for participation. We are aiming to only allow one representative per municipality.

Name of Municipality *

E.g. City of Chicago

Please include type of municipality in the name. E.g. Town of Abington, Aberdeen Village

Address *

Address Line 1

Address Line 2

City

State / Province

County

Zip / Postal Code

Country

Name *

First

Last

Title/Position *

Phone *

Email *

County Survey Questions

- About Your County
 - Services Provided
 - Education & Outreach Activities
 - County Planning, Goals, and Challenges
 - Policy
- Additional Information about Services Provided
 - Permanent Drop-off
 - Special Collection Drop-offs

Why does data matter for munis and counties?

Material Management Plans

**Opportunities for
Regional Collaboration**

Community Master Planning

Program Improvements

Measurement of Goals

Contracting

What can you do to help?

- If you are a municipality, please complete the eMMP
- If you are a county, please complete the county survey and encourage your munis to complete the eMMP
- If you are a facility or a hauler, we want to talk to you too! Please look for more information at a later date
- Website: www.Michigan.gov/egleM3

What are we doing to help?

- Regional meetings/webinars
- Available for questions or support

Where do I get more information about Mega Data project?

- Visit www.Michigan.gov/egleM3
 - Links to eMMP – available on/around May 15th
 - Resources to learn more about how to enter data online
- Please contact EGLE at EGLE-M3@Michigan.gov

Poll #2



Summary

- Transition away from Solid Waste to Materials Management
- Mega Data is the first stop along the M3 Roadmap
- Municipalities and counties will be able to provide information online starting May 15th.
- Working together to build stronger materials management systems in Michigan

Thank You!



Christina Miller
Solid Waste Planning Specialist, EGLE
millerc1@Michigan.gov
517-614-7426



Anna Lynott
Senior Consultant, RRS
alynott@recycle.com
734-646-5822

Michigan Department of
**Environment, Great Lakes, and
Energy**

800-662-9278

www.Michigan.gov/EGLE



Sign up for email updates



Subscribe to our YouTube Channel



Follow us on Twitter @MichiganEGLE